

\$339,900 - 13 4020 21 Street, Edmonton

MLS® #E4458220

\$339,900

3 Bedroom, 1.50 Bathroom, 1,214 sqft

Condo / Townhouse on 0.00 Acres

Larkspur, Edmonton, AB

Welcome to your next adventure in Larkspur! This charming half-duplex is bursting with personality! 1,250 sqft of sunlit living space plus a 405 sqft basement ready for your use. Step into a bright, open-concept main floor where the living room says "stay awhile," and the dining area opens to a fully fenced backyard perfect for BBQs or backyard party. It comes with a storage shed and an apple tree as well. The island kitchen is a snack-lover's paradise with a breakfast nook and cabinets galore! Upstairs, you'll find 3 cozy bedrooms and a 4-piece bath to keep mornings smooth. The primary bedroom? It's got a walk-in closet that's practically begging for a shoe collection. Downstairs, the finished basement is your blank canvas—movie den, workout zone, or epic game room. Perfect for first-time buyers or savvy investors looking to level up. Close to schools, parks, shops, and transit. This gem is move-in ready and waiting to be yours.

Built in 2002

Essential Information

MLS® #	E4458220
Price	\$339,900
Bedrooms	3
Bathrooms	1.50



Full Baths	1
Half Baths	1
Square Footage	1,214
Acres	0.00
Year Built	2002
Type	Condo / Townhouse
Sub-Type	Half Duplex
Style	2 Storey
Status	Active

Community Information

Address	13 4020 21 Street
Area	Edmonton
Subdivision	Larkspur
City	Edmonton
County	ALBERTA
Province	AB
Postal Code	T6T 1T8

Amenities

Amenities	On Street Parking, Deck, Parking Visitor
Parking	Single Garage Attached

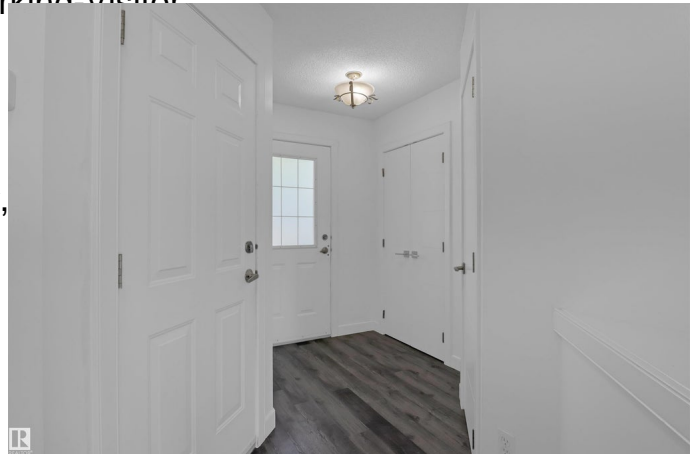
Interior

Appliances	Dishwasher-Built-In, Dryer, Window Coverings
Heating	Forced Air-1, Natural Gas
Stories	3
Has Basement	Yes
Basement	Full, Finished

Exterior

Exterior	Wood, Vinyl
Exterior Features	Airport Nearby, Park/Reserve, Schools, Shopping Nearby
Roof	Asphalt Shingles
Construction	Wood, Vinyl
Foundation	Concrete Perimeter

Additional Information



Date Listed	September 16th, 2025
Days on Market	2
Zoning	Zone 30
Condo Fee	\$251

DATA IS DEEMED RELIABLE BUT IS NOT GUARANTEED ACCURATE BY THE REALTORS® ASSOCIATION OF EDMONTON. COPYRIGHT 2025 BY THE REALTORS® ASSOCIATION OF EDMONTON. ALL RIGHTS RESERVED. Trademarks are owned or controlled by the Canadian Real Estate Association (CREA) and identify real estate professionals who are members of CREA (REALTOR®, REALTORS®) and/or the quality of services they provide (MLS®, Multiple Listing Service®)

Listing information last updated on September 18th, 2025 at 10:02am MDT