

\$524,900 - 428 Rainbow Crescent, Sherwood Park

MLS® #E4455328

\$524,900

5 Bedroom, 3.00 Bathroom, 1,387 sqft

Single Family on 0.00 Acres

Regency Park (Sherwood Park), Sherwood Park, AB

AIR CONDITIONED!! Tucked away in a keyhole crescent, this home has been meticulously maintained by the same owners for 20 years! 2500+ sqft of developed living space with 5 bedrooms, 3 Full bathrooms, an updated kitchen, white cabinetry, GRANITE countertops & stainless appliances, open to dining nook flooded in natural light, access to the attached 2 tier deck complete with awning, living room w/Gas fireplace, a beautiful formal dining room for all your family gatherings, the primary is perfectly positioned over the garage with walk in closet and ensuite with both soaker tub and glass shower, 2 other good sized bedroom on the main with shared access to a 4 piece bath, laundry completes this level. Lower level is finished with huge windows that eliminate that 'basement feel", 2 large bedrooms, a big famiy room, a full 3 piece bath and mechanical complete the lower level. Hot Water tank (2024), Furnace & A/C (2023), Shingles (2014) Shows 10/10!

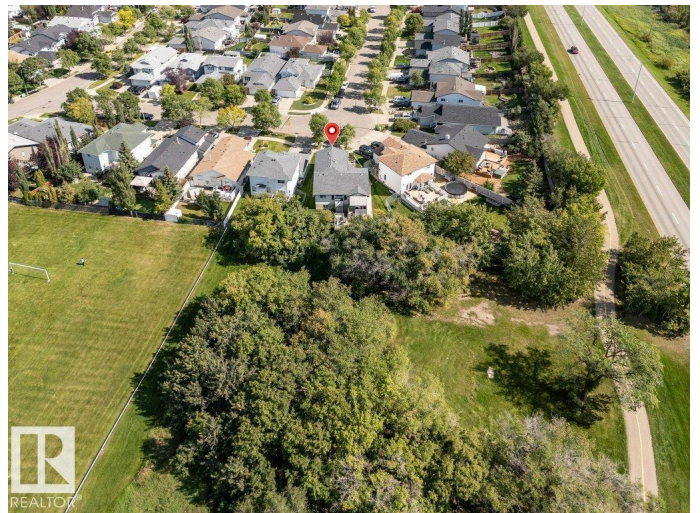
Built in 1998

Essential Information

MLS® # E4455328

Price \$524,900

Bedrooms 5



Bathrooms	3.00
Full Baths	3
Square Footage	1,387
Acres	0.00
Year Built	1998
Type	Single Family
Sub-Type	Detached Single Family
Style	Bi-Level
Status	Active

Community Information

Address	428 Rainbow Crescent
Area	Sherwood Park
Subdivision	Regency Park (Sherwood Park)
City	Sherwood Park
County	ALBERTA
Province	AB
Postal Code	T8A 5W4

Amenities

Amenities	Air Conditioner, Deck, Vaulted Ceiling, Vinyl Windows
Parking	Double Garage Attached

Interior

Interior Features	ensuite bathroom
Appliances	Air Conditioning-Central, Dishwasher-Built-In, Dryer, Microwave Hood Fan, Refrigerator, Stove-Electric, Washer, Window Coverings
Heating	Forced Air-1, Natural Gas
Stories	3
Has Basement	Yes
Basement	Full, Finished

Exterior

Exterior	Wood, Vinyl
Exterior Features	Cul-De-Sac, Landscaped, Low Maintenance Landscape, Schools, Shopping Nearby
Roof	Asphalt Shingles
Construction	Wood, Vinyl
Foundation	Concrete Perimeter

Additional Information

Date Listed August 29th, 2025
Days on Market 1
Zoning Zone 25

DATA IS DEEMED RELIABLE BUT IS NOT GUARANTEED ACCURATE BY THE REALTORS® ASSOCIATION OF EDMONTON. COPYRIGHT 2025 BY THE REALTORS® ASSOCIATION OF EDMONTON. ALL RIGHTS RESERVED.Trademarks are owned or controlled by the Canadian Real Estate Association (CREA) and identify real estate professionals who are members of CREA (REALTOR®, REALTORS®) and/or the quality of services they provide (MLS®, Multiple Listing Service®)
Listing information last updated on August 30th, 2025 at 2:47am MDT