

\$235,000 - 11514 139 Avenue, Edmonton

MLS® #E4455312

\$235,000

3 Bedroom, 1.50 Bathroom, 1,016 sqft

Condo / Townhouse on 0.00 Acres

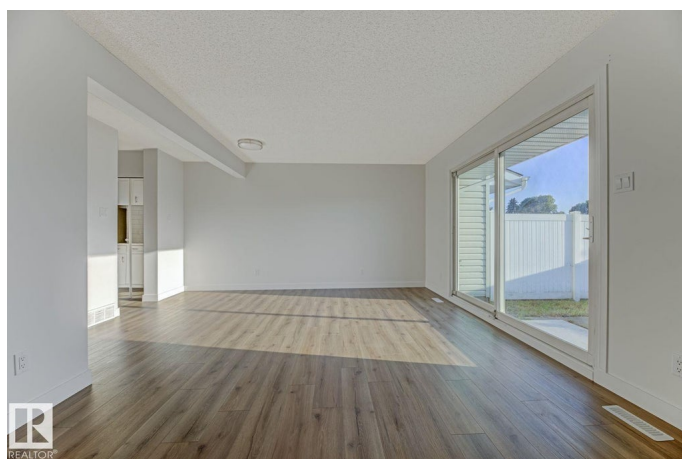
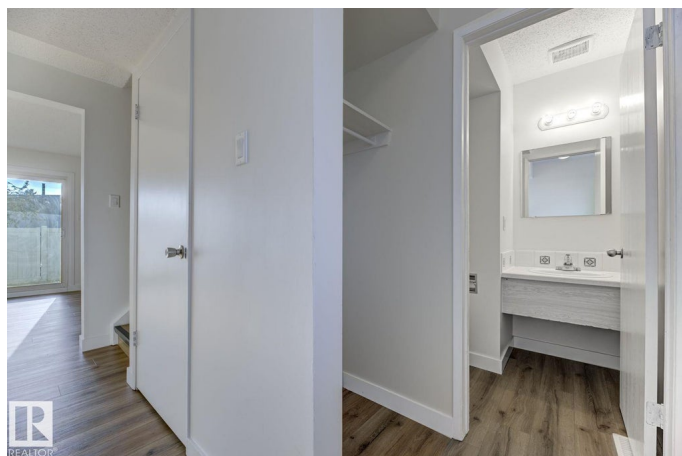
Carlisle, Edmonton, AB

Visit the Listing Brokerage (and/or listing REALTOR®) website to obtain additional information. Welcome home! Recently updated 3-bedroom, 1.5 bathroom townhouse featuring brand new vinyl plank flooring throughout and fresh paint. The kitchen has been updated with brand new countertops, backsplash, sink, faucet and BRAND NEW LG stainless steel kitchen appliances. Main floor features a guest 2-pc bath and a large living/dining room. Upstairs you have a full 4-pc bath with three comfortable bedrooms and an extra storage closet. The basement is unfinished with work benches installed. Outside is a nice-sized yard for your pets with west exposure for evening sun. Assigned parking stall DIRECTLY in front of the unit with an option to request an additional stall from the condo board. Well run complex with many updates done and more coming. Close to parks and an elementary school. Quick possession available.

Built in 1977

Essential Information

MLS® #	E4455312
Price	\$235,000
Bedrooms	3
Bathrooms	1.50
Full Baths	1



Half Baths	1
Square Footage	1,016
Acres	0.00
Year Built	1977
Type	Condo / Townhouse
Sub-Type	Townhouse
Style	2 Storey
Status	Active

Community Information

Address	11514 139 Avenue
Area	Edmonton
Subdivision	Carlisle
City	Edmonton
County	ALBERTA
Province	AB
Postal Code	T5X 3L4

Amenities

Amenities	Parking-Visitor, See Remarks
Parking Spaces	1
Parking	Stall

Interior

Appliances	Dryer, Hood Fan, Refrigerator, Stove-Electric, Washer
Heating	Forced Air-2, Natural Gas
Stories	2
Has Basement	Yes
Basement	Full, Unfinished

Exterior

Exterior	Wood, Stucco
Exterior Features	Playground Nearby, See Remarks
Roof	Asphalt Shingles
Construction	Wood, Stucco
Foundation	Concrete Perimeter

Additional Information

Date Listed	August 29th, 2025
-------------	-------------------

Days on Market	1
Zoning	Zone 27
Condo Fee	\$406

DATA IS DEEMED RELIABLE BUT IS NOT GUARANTEED ACCURATE BY THE REALTORS® ASSOCIATION OF EDMONTON. COPYRIGHT 2025 BY THE REALTORS® ASSOCIATION OF EDMONTON. ALL RIGHTS RESERVED.Trademarks are owned or controlled by the Canadian Real Estate Association (CREA) and identify real estate professionals who are members of CREA (REALTOR®, REALTORS®) and/or the quality of services they provide (MLS®, Multiple Listing Service®)

Listing information last updated on August 30th, 2025 at 3:32am MDT