

\$469,000 - 2905 Duke Crescent, Edmonton

MLS® #E4455310

\$469,000

3 Bedroom, 2.50 Bathroom, 1,555 sqft

Single Family on 0.00 Acres

Desrochers Area, Edmonton, AB

Welcome to this beautifully crafted Landmark home, designed with comfort, style, and efficiency in mind! This home offers over 1,550 sq.ft. of thoughtfully planned living space. A minute away from School St.Thomas Aquinas Elementary/Junior. Step inside to an inviting main floor with 9ft. ceilings, a spacious open-concept layout, and an impressive island that anchors the gourmet kitchen. The kitchen is complete with stainless steel appliances, a walk-through pantry. The bright dining area flows seamlessly into the cozy living room, creating the ideal setting to gathering. The upper level offers three spacious bedrooms, including a primary suite designed for relaxation and the convenience of upstairs laundry. The secondary bedrooms and an additional bathroom provide plenty of room for children and guests. Fully Fenced and Landscaped Backyard with a deck perfect for summer Barbecues. Located within walking distance to the community school , shopping, airport, Anthony Henday, and Calgary Trail.

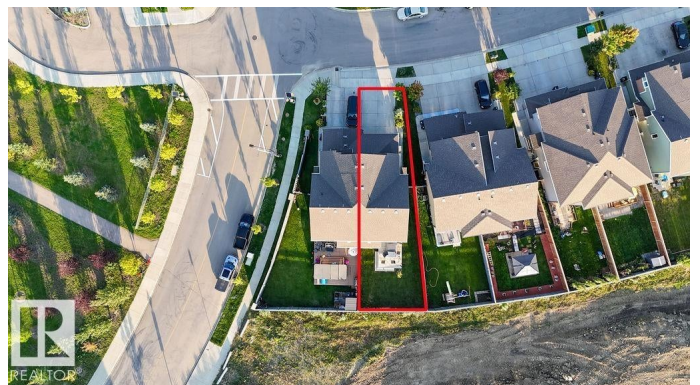
Built in 2018

Essential Information

MLS® # E4455310

Price \$469,000

Bedrooms 3



Bathrooms	2.50
Full Baths	2
Half Baths	1
Square Footage	1,555
Acres	0.00
Year Built	2018
Type	Single Family
Sub-Type	Half Duplex
Style	2 Storey
Status	Active

Community Information

Address	2905 Duke Crescent
Area	Edmonton
Subdivision	Desrochers Area
City	Edmonton
County	ALBERTA
Province	AB
Postal Code	T6W 3Y4

Amenities

Amenities	Ceiling 9 ft., Deck, See Remarks
Parking	Double Garage Attached

Interior

Interior Features	ensuite bathroom
Appliances	Dishwasher-Built-In, Dryer, Garage Control, Garage Opener, Microwave Hood Fan, Refrigerator, Stove-Electric, Washer, See Remarks, Curtains and Blinds
Heating	Forced Air-1, Natural Gas
Stories	2
Has Basement	Yes
Basement	Full, Unfinished

Exterior

Exterior	Wood, Vinyl
Exterior Features	Fenced, Landscaped, Playground Nearby, Public Transportation, Schools, Shopping Nearby
Roof	Asphalt Shingles

Construction	Wood, Vinyl
Foundation	Concrete Perimeter

Additional Information

Date Listed	August 29th, 2025
Days on Market	1
Zoning	Zone 55

DATA IS DEEMED RELIABLE BUT IS NOT GUARANTEED ACCURATE BY THE REALTORS® ASSOCIATION OF EDMONTON. COPYRIGHT 2025 BY THE REALTORS® ASSOCIATION OF EDMONTON. ALL RIGHTS RESERVED.Trademarks are owned or controlled by the Canadian Real Estate Association (CREA) and identify real estate professionals who are members of CREA (REALTOR®, REALTORS®) and/or the quality of services they provide (MLS®, Multiple Listing Service®)

Listing information last updated on August 30th, 2025 at 3:02am MDT