

\$679,800 - 10824 66 Avenue, Edmonton

MLS® #E4455270

\$679,800

5 Bedroom, 3.50 Bathroom, 1,651 sqft

Single Family on 0.00 Acres

Allendale, Edmonton, AB

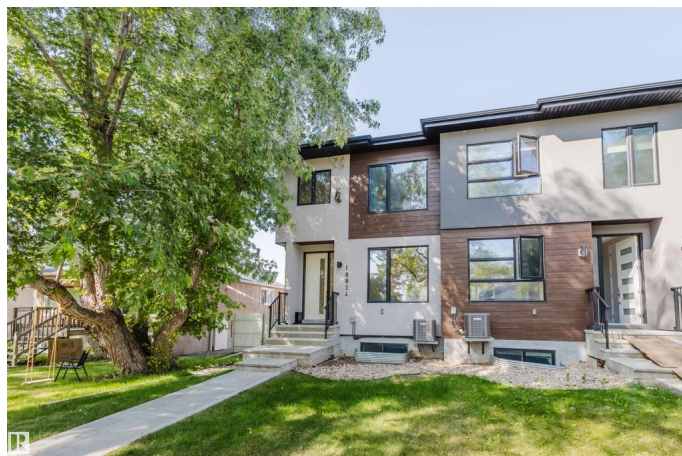
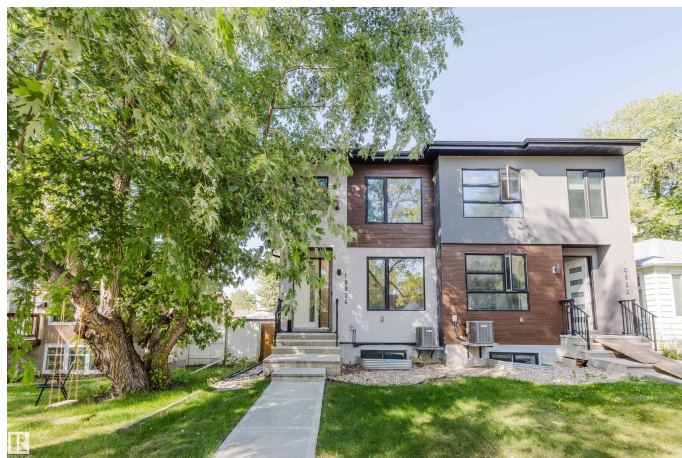
Welcome to this well-appointed Half Duplex home in the desirable Allendale w/ a TWO bedrooms LEGAL basement suite. Sitting on a tree-lined quiet street, this air conditioned home in MINT condition will check all your boxes! Contemporary design & finishes w/ 9' ceiling & wide-plank engineered HW on main floor; SOUTH facing living room connects to a spacious formal dining room. Sleek kitchen has TWO tone ceiling height cabinets, B/I Oven & microwave, canopy hood fan, quartz countertop & large center island. Upstairs primary bdrm has a 5pc ensuite w/ his/her sinks, soaker tub & a standing shower, TWO more good sized bdrms, a 4pc main bath & laundry. Legal basement suite is your mortgage helper w/ kitchen, a living/dining area, TWO bedrooms, a full bath & a laundry set. Beautifully landscaped low maintenance backyard w/ a cedar deck, large paver patio & a double detached garage. Located close to Allendale School & easy access to UofA and this is a RARE find & feature-loaded home awaiting for you!

Built in 2019

Essential Information

MLS® # E4455270

Price \$679,800



10824 66 Ave NW, Edmonton, AB

Basement (Below Grade) Exterior Area 730.07 sq ft
Interior Area 633.56 sq ft



Bedrooms	5
Bathrooms	3.50
Full Baths	3
Half Baths	1
Square Footage	1,651
Acres	0.00
Year Built	2019
Type	Single Family
Sub-Type	Half Duplex
Style	2 Storey
Status	Active

Community Information

Address	10824 66 Avenue
Area	Edmonton
Subdivision	Allendale
City	Edmonton
County	ALBERTA
Province	AB
Postal Code	T6H 1X9

Amenities

Amenities	Air Conditioner, Ceiling 9 ft., Deck, Detectors Smoke, Vinyl Windows, HRV System
Parking Spaces	4
Parking	Double Garage Detached

Interior

Interior Features	ensuite bathroom
Appliances	Air Conditioning-Central, Dishwasher-Built-In, Dryer, Garage Control, Garage Opener, Hood Fan, Oven-Built-In, Stacked Washer/Dryer, Stove-Countertop Electric, Stove-Electric, Washer, Window Coverings
Heating	Forced Air-2, Natural Gas
Stories	3
Has Suite	Yes
Has Basement	Yes
Basement	Full, Finished

Exterior

Exterior	Wood, Stucco, Vinyl
Exterior Features	Back Lane, Fenced, Flat Site, Landscaped, Public Transportation, Schools, Shopping Nearby
Roof	Asphalt Shingles
Construction	Wood, Stucco, Vinyl
Foundation	Concrete Perimeter

School Information

Elementary	Parkallen School
Middle	Allendale School
High	Strathcona School

Additional Information

Date Listed	August 29th, 2025
Days on Market	1
Zoning	Zone 15

DATA IS DEEMED RELIABLE BUT IS NOT GUARANTEED ACCURATE BY THE REALTORS® ASSOCIATION OF EDMONTON. COPYRIGHT 2025 BY THE REALTORS® ASSOCIATION OF EDMONTON. ALL RIGHTS RESERVED. Trademarks are owned or controlled by the Canadian Real Estate Association (CREA) and identify real estate professionals who are members of CREA (REALTOR®, REALTORS®) and/or the quality of services they provide (MLS®, Multiple Listing Service®)

Listing information last updated on August 30th, 2025 at 10:03am MDT