

\$220,000 - 14017 121 Street, Edmonton

MLS® #E4453097

\$220,000

3 Bedroom, 1.50 Bathroom, 1,072 sqft
Condo / Townhouse on 0.00 Acres

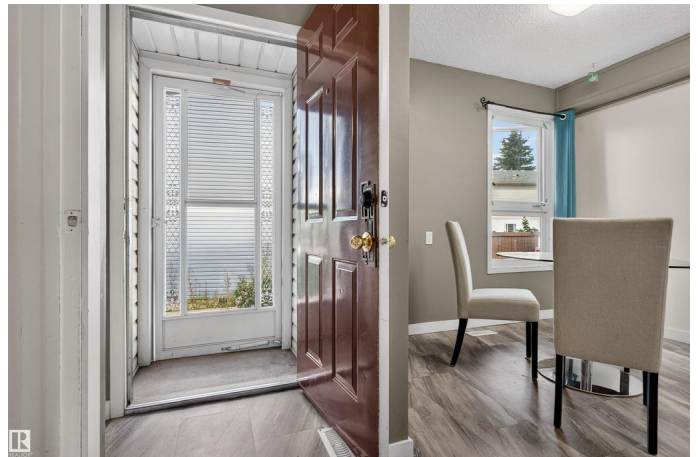
Carlisle, Edmonton, AB

Welcome to the sought after Castlewood Grove, with easy access to the Anthony Henday, shopping, transit and greenspace - this three bedroom, 1 & 1/2 bathroom townhouse condo has a fenced yard, cozy wood burning fireplace and bright, spacious rooms to fit a busy lifestyle, growing family or investor portfolio perfectly. The well kept townhouse has a bright eat in kitchen with ample counter space and appliances included. Linoleum flooring in the kitchen & Laminate in most of the main level. Super bright living room has an amazing wood burning fireplace and sliding doors leading to ur backyard. The upstairs has three spacious bedrooms & a full washroom. Basement is partially finished with a family room / gym area and laundry & a hot water tank. The backyard is private, fenced and perfect for a little get together. Comes with one powered parking stall. Super close to public transportation, banks, pharmacy, shopping, fast food, Schools and playgrounds.

Built in 1979

Essential Information

MLS® #	E4453097
Price	\$220,000
Bedrooms	3



Bathrooms	1.50
Full Baths	1
Half Baths	1
Square Footage	1,072
Acres	0.00
Year Built	1979
Type	Condo / Townhouse
Sub-Type	Townhouse
Style	2 Storey
Status	Active

Community Information

Address	14017 121 Street
Area	Edmonton
Subdivision	Carlisle
City	Edmonton
County	ALBERTA
Province	AB
Postal Code	T5X 4H8

Amenities

Amenities	On Street Parking, Deck, Hot Water Natural Gas, Parking-Extra, Patio
Parking Spaces	1
Parking	Stall

Interior

Appliances	Dryer, Freezer, Furniture Included, Hood Fan, Refrigerator, Stove-Electric, Washer, Window Coverings
Heating	Forced Air-1, Natural Gas, Wood
Fireplace	Yes
Fireplaces	Brick Facing
Stories	2
Has Basement	Yes
Basement	Full, Partially Finished

Exterior

Exterior	Wood, Vinyl
Exterior Features	Fenced, Fruit Trees/Shrubs, Landscaped, Low Maintenance Landscape, Public Transportation, Schools, Shopping Nearby

Roof	Asphalt Shingles
Construction	Wood, Vinyl
Foundation	Concrete Perimeter

School Information

Elementary	Caernarvon School,Baturyn
Middle	Mary Butterworth School
High	M.E. LaZerte High School

Additional Information

Date Listed	August 15th, 2025
Days on Market	1
Zoning	Zone 27
Condo Fee	\$410

DATA IS DEEMED RELIABLE BUT IS NOT GUARANTEED ACCURATE BY THE REALTORS® ASSOCIATION OF EDMONTON. COPYRIGHT 2025 BY THE REALTORS® ASSOCIATION OF EDMONTON. ALL RIGHTS RESERVED.Trademarks are owned or controlled by the Canadian Real Estate Association (CREA) and identify real estate professionals who are members of CREA (REALTOR®, REALTORS®) and/or the quality of services they provide (MLS®, Multiple Listing Service®)

Listing information last updated on August 16th, 2025 at 5:47am MDT