

\$209,900 - 172 8735 165 Street, Edmonton

MLS® #E4451736

\$209,900

3 Bedroom, 1.50 Bathroom, 1,249 sqft
Condo / Townhouse on 0.00 Acres

West Meadowlark Park, Edmonton, AB

Stunning 3 bedroom Penthouse offers Panoramic Views from the 17th Floor. Extensively renovated, it boasts a gorgeous chef's kitchen with quartz countertops, numerous cabinets with soft close drawers, stainless steel appliances with overhead range hood and easy clean laminate floors. The living room offers space to relax and unwind after a busy day. The master bedroom has its own balcony, walk-in closet and ensuite, including the laundry. Easy Access to public transit and schools. Short walk to West Edmonton mall and misericordia hospital. Amazing view from every window. Heat, water and electricity is included

Built in 1970

Essential Information

| | |
|----------------|-------------------|
| MLS® # | E4451736 |
| Price | \$209,900 |
| Bedrooms | 3 |
| Bathrooms | 1.50 |
| Full Baths | 1 |
| Half Baths | 1 |
| Square Footage | 1,249 |
| Acres | 0.00 |
| Year Built | 1970 |
| Type | Condo / Townhouse |



| | |
|----------|---------------------|
| Sub-Type | Apartment High Rise |
| Style | Penthouse |
| Status | Active |

Community Information

| | |
|-------------|----------------------|
| Address | 172 8735 165 Street |
| Area | Edmonton |
| Subdivision | West Meadowlark Park |
| City | Edmonton |
| County | ALBERTA |
| Province | AB |
| Postal Code | T5R 2R6 |

Amenities

| | |
|-----------|--|
| Amenities | Detectors Smoke, Intercom, Parking-Plug-Ins, Parking-Visitor, Security Personnel |
| Parking | Parkade |

Interior

| | |
|-------------------|---|
| Interior Features | ensuite bathroom |
| Appliances | Dishwasher-Built-In, Euro Washer/Dryer Combo, Fan-Ceiling, Refrigerator, Stove-Electric, Window Coverings |
| Heating | Forced Air-1, Natural Gas |
| # of Stories | 17 |
| Stories | 1 |
| Has Basement | Yes |
| Basement | None, No Basement |

Exterior

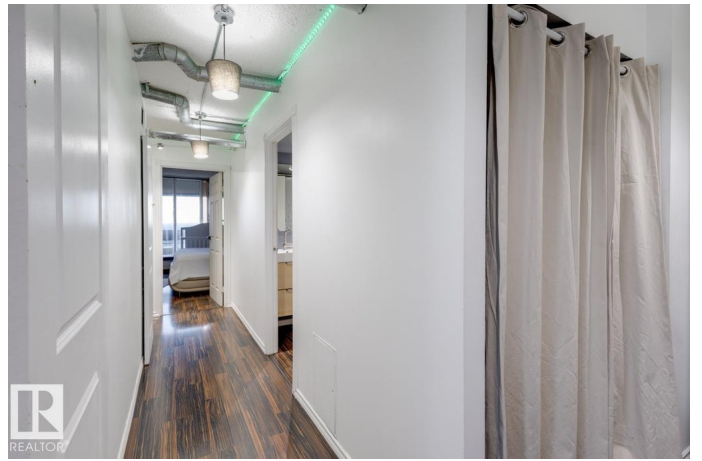
| | |
|-------------------|---|
| Exterior | Concrete |
| Exterior Features | Landscaped, Park/Reserve, Public Transportation, Schools, Shopping Nearby, View City, View Downtown |
| Roof | Asphalt Shingles |
| Construction | Concrete |
| Foundation | Concrete Perimeter |

Additional Information

| | |
|----------------|------------------|
| Date Listed | August 7th, 2025 |
| Days on Market | 8 |
| Zoning | Zone 22 |

Condo Fee

\$730



DATA IS DEEMED RELIABLE BUT IS NOT GUARANTEED ACCURATE BY THE REALTORS® ASSOCIATION OF EDMONTON. COPYRIGHT 2025 BY THE REALTORS® ASSOCIATION OF EDMONTON. ALL RIGHTS RESERVED. Trademarks are owned or controlled by the Canadian Real Estate Association (CREA) and identify real estate professionals who are members of CREA (REALTOR®, REALTORS®) and/or the quality of services they provide (MLS®, Multiple Listing Service®)

Listing information last updated on August 15th, 2025 at 1:17am MDT