

\$264,900 - 32 4029 Orchards Drive, Edmonton

MLS® #E4450546

\$264,900

2 Bedroom, 1.00 Bathroom, 856 sqft

Condo / Townhouse on 0.00 Acres

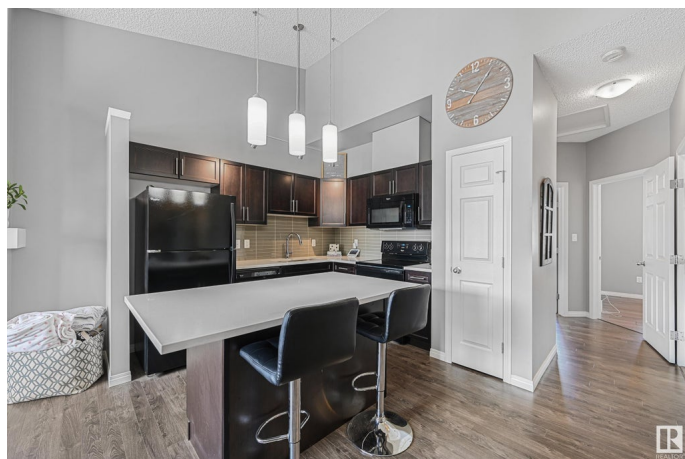
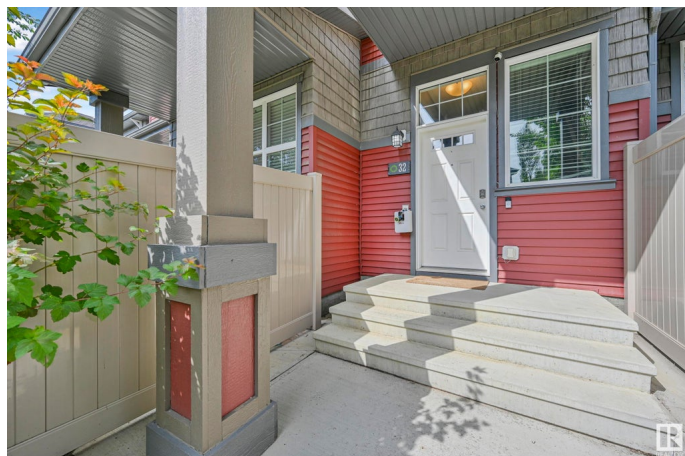
The Orchards At Ellerslie, Edmonton, AB

Welcome to The Orchards at Ellerslie! This bright and well-maintained 2-bedroom, 856 sq ft townhome offers a functional layout with all living space on the upper level. The open-concept kitchen flows into a spacious living room featuring large windows, an electric fireplace, and access to a sunny upper-level patio. Enjoy the convenience of in-suite laundry, a 4-piece bathroom, and an attached single garage on the lower level. Located across from green space, this home is part of a vibrant HOA community that includes full access to the Clubhouse—featuring a skating rink, tennis courts, spray park, playground, and year-round programs. Pet-friendly and with low condo fees, this home is ideal for first-time buyers or investors looking for low-maintenance living in a growing south Edmonton neighbourhood.

Built in 2014

Essential Information

MLS® #	E4450546
Price	\$264,900
Bedrooms	2
Bathrooms	1.00
Full Baths	1
Square Footage	856
Acres	0.00



Year Built	2014
Type	Condo / Townhouse
Sub-Type	Townhouse
Style	2 Storey
Status	Active

Community Information

Address	32 4029 Orchards Drive
Area	Edmonton
Subdivision	The Orchards At Ellerslie
City	Edmonton
County	ALBERTA
Province	AB
Postal Code	T6X 1V2

Amenities

Amenities	Closet Organizers, Deck, Detectors Smoke, Front Porch, No Smoking Home, Vinyl Windows
Parking	Single Garage Attached

Interior

Appliances	Dishwasher-Built-In, Dryer, Garage Control, Garage Opener, Microwave Hood Fan, Refrigerator, Stove-Electric, Washer, Window Coverings, TV Wall Mount
Heating	Forced Air-1, Natural Gas
Fireplace	Yes
Fireplaces	Insert
Stories	2
Has Basement	Yes
Basement	None, No Basement

Exterior

Exterior	Wood, Vinyl
Exterior Features	Back Lane, Flat Site, Fruit Trees/Shrubs, Golf Nearby, Landscaped, Level Land, No Through Road, Park/Reserve, Picnic Area, Playground Nearby, Schools, Shopping Nearby
Roof	Asphalt Shingles
Construction	Wood, Vinyl
Foundation	Concrete Perimeter

Additional Information

Date Listed	July 31st, 2025
Days on Market	2
Zoning	Zone 53
HOA Fees	450
HOA Fees Freq.	Annually
Condo Fee	\$252

DATA IS DEEMED RELIABLE BUT IS NOT GUARANTEED ACCURATE BY THE REALTORS® ASSOCIATION OF EDMONTON. COPYRIGHT 2025 BY THE REALTORS® ASSOCIATION OF EDMONTON. ALL RIGHTS RESERVED.Trademarks are owned or controlled by the Canadian Real Estate Association (CREA) and identify real estate professionals who are members of CREA (REALTOR®, REALTORS®) and/or the quality of services they provide (MLS®, Multiple Listing Service®)

Listing information last updated on August 2nd, 2025 at 5:02am MDT