

Courtesy Of Sarah L Lizée Of RE/MAX Elite

\$539,900 - 205 Larch Crescent, Leduc

MLS® #E4449917

\$539,900

3 Bedroom, 2.50 Bathroom, 1,777 sqft

Single Family on 0.00 Acres

Woodbend, Leduc, AB

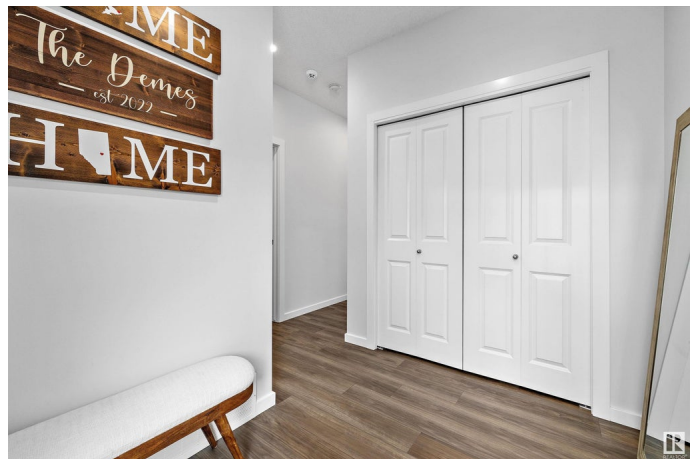
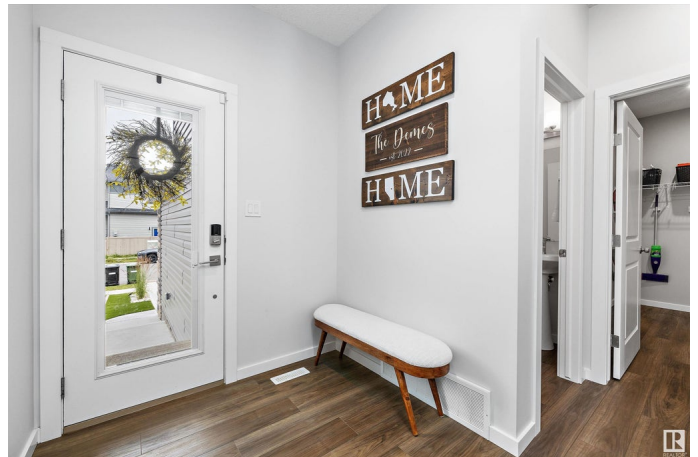
Immaculately kept and move-in ready, this stylish home offers comfort and function with thoughtful upgrades on every level. Enjoy the convenience of central A/C, upgraded paint, and quartz countertops throughout. The main floor features tall ceilings and a spacious kitchen with white cabinetry, black subway tile backsplash, large island, and walk-through pantry. The open-concept living area includes pot lighting and cozy electric fireplace, with a bright, large dining nook that leads to the beautifully landscaped backyard with a deck—perfect for relaxing or entertaining. Upstairs offers a generous flex space, laundry room, and three well-appointed bedrooms. The primary suite includes a walk-in closet and ensuite with double sinks. Another full bathroom completes the upper level. Additional highlights include upgraded lighting, heated double garage with epoxy floors, low-maintenance front yard, and an unfinished basement ready for your personal touch. Located close to schools, playgrounds, and more.

Built in 2021

Essential Information

MLS® # E4449917

Price \$539,900



Bedrooms	3
Bathrooms	2.50
Full Baths	2
Half Baths	1
Square Footage	1,777
Acres	0.00
Year Built	2021
Type	Single Family
Sub-Type	Detached Single Family
Style	2 Storey
Status	Active

Community Information

Address	205 Larch Crescent
Area	Leduc
Subdivision	Woodbend
City	Leduc
County	ALBERTA
Province	AB
Postal Code	T9E 1N2

Amenities

Amenities	Air Conditioner, Ceiling 9 ft., Deck, No Animal Home, No Smoking Home, See Remarks
Parking	Double Garage Attached, Heated

Interior

Interior Features	ensuite bathroom
Appliances	Dishwasher-Built-In, Dryer, Freezer, Garage Opener, Oven-Microwave, Refrigerator, Storage Shed, Stove-Electric, Washer, Window Coverings
Heating	Forced Air-1, Natural Gas
Fireplace	Yes
Fireplaces	Mantel
Stories	2
Has Basement	Yes
Basement	Full, Unfinished

Exterior

Exterior	Wood, Vinyl
----------	-------------

Exterior Features	Airport Nearby, Golf Nearby, Landscaped, Playground Nearby, Schools, Shopping Nearby, See Remarks
Roof	Asphalt Shingles
Construction	Wood, Vinyl
Foundation	Concrete Perimeter

Additional Information

Date Listed	July 26th, 2025
Days on Market	4
Zoning	Zone 81

DATA IS DEEMED RELIABLE BUT IS NOT GUARANTEED ACCURATE BY THE REALTORS® ASSOCIATION OF EDMONTON. COPYRIGHT 2025 BY THE REALTORS® ASSOCIATION OF EDMONTON. ALL RIGHTS RESERVED.Trademarks are owned or controlled by the Canadian Real Estate Association (CREA) and identify real estate professionals who are members of CREA (REALTOR®, REALTORS®) and/or the quality of services they provide (MLS®, Multiple Listing Service®)

Listing information last updated on July 30th, 2025 at 4:17pm MDT