

## \$239,900 - 411 10333 112 Street, Edmonton

MLS® #E4449832

**\$239,900**

2 Bedroom, 2.00 Bathroom, 881 sqft

Condo / Townhouse on 0.00 Acres

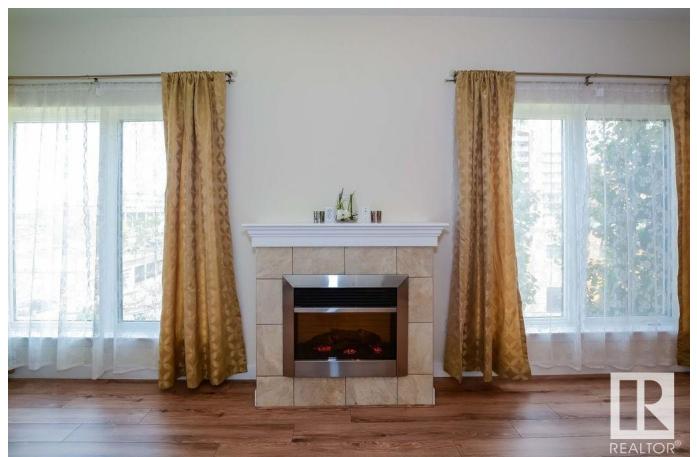
WÃ@hkwÃªntÃ´win, Edmonton, AB

â€œMODERN & BREATHTAKING ITALIAN ARCHITECTURE DESIGNâ€• best describes this STEEL & CONCRETE residential condominium building (THE VENETIAN) centrally located within walking distance to MacEwan University & Unity Square. This 881 SQFT two bedrooms + 2 baths (both 4-pieces) CORNER condominium unit in WÃ@hkwÃªntÃ´win (formerly Oliver) neighbourhood. Granite counters, stainless appliance, newer laminate floor, Located on the 4th floor. Fireplace, Insuite Laundry Room, Central Air conditioned, Heated Underground Parking, Mainfloor Fitness Room, Two Elevators, Video Security, full time onsite management. Located near, Downtown, Shopping, Entertainment. Just a stoneâ€™s throw away from the future Valley Line LRT Station (MacEwan Arts/112 Street Stop)

Built in 2008

### Essential Information

MLS® #	E4449832
Price	\$239,900
Bedrooms	2
Bathrooms	2.00
Full Baths	2
Square Footage	881
Acres	0.00



Year Built	2008
Type	Condo / Townhouse
Sub-Type	Apartment High Rise
Style	Single Level Apartment
Status	Active

### Community Information

Address	411 10333 112 Street
Area	Edmonton
Subdivision	WÃ©hkwÃ©ntÃ©win
City	Edmonton
County	ALBERTA
Province	AB
Postal Code	T5K 0B4

### Amenities

Amenities	Off Street Parking, Air Conditioner, Ceiling 9 ft., Detectors Smoke, Exercise Room, Intercom, Parking-Visitor, Secured Parking, Security Door, Sprinkler System-Fire, Vinyl Windows
Parking Spaces	1
Parking	Heated, Underground

### Interior

Interior Features	ensuite bathroom
Appliances	Air Conditioning-Central, Dishwasher-Built-In, Dryer, Intercom, Microwave Hood Fan, Refrigerator, Stacked Washer/Dryer, Stove-Electric, Washer
Heating	Forced Air-1, Natural Gas
Fireplace	Yes
Fireplaces	Mantel
# of Stories	6
Stories	1
Has Basement	Yes
Basement	None, No Basement

### Exterior

Exterior	Concrete, Stucco
Exterior Features	Flat Site, Landscaped, Public Transportation, Schools, Shopping Nearby
Roof	EPDM Membrane

Construction	Concrete, Stucco
Foundation	Concrete Perimeter

**School Information**

Elementary	WĀŽHKWĀŠNTĀ”WIN SCHOOL
Middle	WESTMINSTER SCHOOL
High	VICTORIA SCHOOL

**Additional Information**

Date Listed	July 25th, 2025
Days on Market	6
Zoning	Zone 12
Condo Fee	\$591

DATA IS DEEMED RELIABLE BUT IS NOT GUARANTEED ACCURATE BY THE REALTORS® ASSOCIATION OF EDMONTON. COPYRIGHT 2025 BY THE REALTORS® ASSOCIATION OF EDMONTON. ALL RIGHTS RESERVED.Trademarks are owned or controlled by the Canadian Real Estate Association (CREA) and identify real estate professionals who are members of CREA (REALTOR®, REALTORS®) and/or the quality of services they provide (MLS®, Multiple Listing Service®)

Listing information last updated on July 31st, 2025 at 11:03am MDT