

## \$239,900 - 426 2098 Blackmud Creek Drive, Edmonton

MLS® #E4449809

**\$239,900**

2 Bedroom, 2.00 Bathroom, 1,076 sqft

Condo / Townhouse on 0.00 Acres

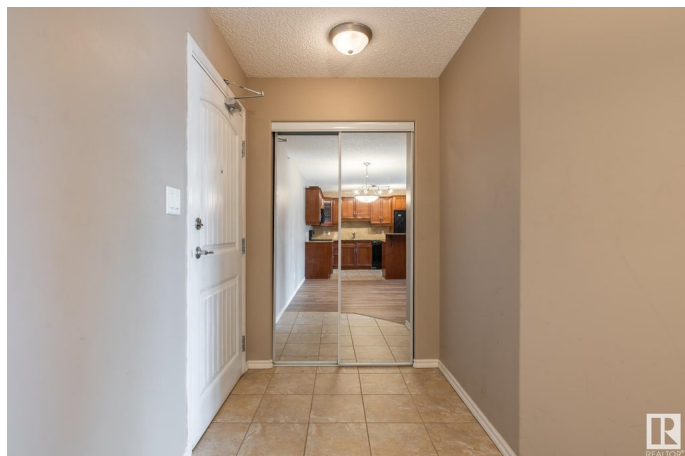
Blackmud Creek, Edmonton, AB

Lovely Top Floor Central Air Conditioned South Facing 2 bedroom, 2 full bathroom, 2 Titled Parking Stalls. In suite Landry. Kitchen with Granite and lots of Counter and Cabinet space including a working island. Gas Fireplace in bright Living room with access to Patio with Gas BBQ outlet. Very Spacious Bedrooms. Primary with dule Closets and large walk in Shower in ensuite. One underground Parking Stall with adjacent storage cage. Second Parking Stall is above ground. Building has Social, Games and Fitness Room plus a Guest Suite that can be rented out for a nominal fee. Very well maintained Complex easy access to Shops, Schools, Public Transit, Airport and so much more.

Built in 2004

### Essential Information

MLS® #	E4449809
Price	\$239,900
Bedrooms	2
Bathrooms	2.00
Full Baths	2
Square Footage	1,076
Acres	0.00
Year Built	2004



Type	Condo / Townhouse
Sub-Type	Lowrise Apartment
Style	Single Level Apartment
Status	Active

### Community Information

Address	426 2098 Blackmud Creek Drive
Area	Edmonton
Subdivision	Blackmud Creek
City	Edmonton
County	ALBERTA
Province	AB
Postal Code	T6W 1T7

### Amenities

Amenities	Air Conditioner, Deck, Exercise Room, Guest Suite, Intercom, No Animal Home, Parking-Plug-Ins, Parking-Visitor, Recreation Room/Centre, Secured Parking, Security Door, Storage-In-Suite, See Remarks, Storage Cage, Natural Gas BBQ Hookup
Parking Spaces	2
Parking	Stall, Underground, See Remarks

### Interior

Interior Features	ensuite bathroom
Appliances	Air Conditioning-Central, Dishwasher-Built-In, Garage Control, Refrigerator, Stacked Washer/Dryer, Stove-Electric, Window Coverings, Microwave Hood Fan-Two
Heating	Fan Coil, Natural Gas
Fireplace	Yes
Fireplaces	Brick Facing, Corner, Glass Door
# of Stories	4
Stories	1
Has Basement	Yes
Basement	None, No Basement

### Exterior

Exterior	Wood, Stone, Vinyl
Exterior Features	Airport Nearby, Golf Nearby, Park/Reserve, Playground Nearby, Public Transportation, Schools, Shopping Nearby, See Remarks
Roof	Asphalt Shingles

Construction	Wood, Stone, Vinyl
Foundation	Concrete Perimeter

**Additional Information**

Date Listed	July 25th, 2025
Days on Market	6
Zoning	Zone 55
Condo Fee	\$589

DATA IS DEEMED RELIABLE BUT IS NOT GUARANTEED ACCURATE BY THE REALTORS® ASSOCIATION OF EDMONTON. COPYRIGHT 2025 BY THE REALTORS® ASSOCIATION OF EDMONTON. ALL RIGHTS RESERVED.Trademarks are owned or controlled by the Canadian Real Estate Association (CREA) and identify real estate professionals who are members of CREA (REALTOR®, REALTORS®) and/or the quality of services they provide (MLS®, Multiple Listing Service®)

Listing information last updated on July 31st, 2025 at 8:17am MDT