

## \$598,800 - 7819 Yorke Road, Edmonton

MLS® #E4449785

**\$598,800**

3 Bedroom, 3.50 Bathroom, 1,927 sqft

Single Family on 0.00 Acres

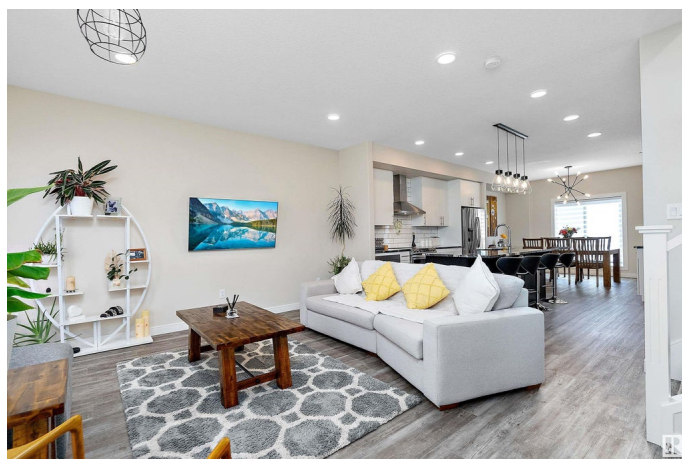
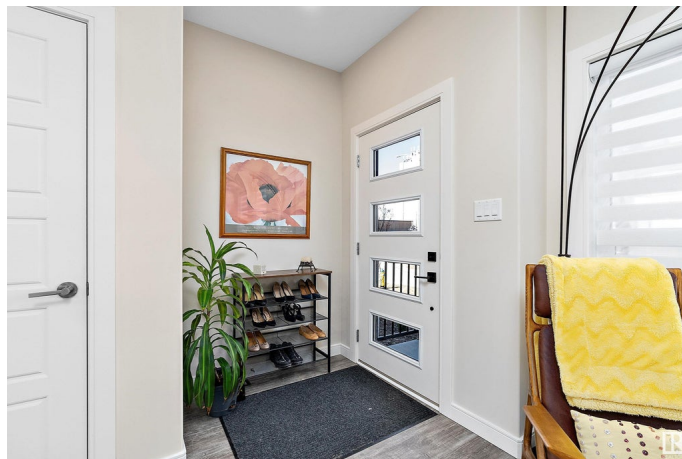
Blatchford Area, Edmonton, AB

Welcome to the award winning energy efficient Blatchford community, introducing you to this custom built 3 Storey featuring rooftop patio, fully fenced and landscaped yard with double detached garage. 3 large bedrooms with the master on the 3rd level with Full 4 piece ensuite and massive walk in closet. 2nd level has laundry room; bedrooms 2 and 3 also have full ensuites. 9 ft ceilings on the main floor. Galley kitchen with custom cabinets, coffee station and prep island. Quartz counter tops and all high end smart Stainless appliances, and handy side by side pantry. Custom iron railings, vinyl plank floor on the main floor geo-thermally heated and cooled with smart room thermostats. Location is close to NAIT, Royal Alex hospital and the ICE District and walking distance to the Brand new LRT train station!

Built in 2021

### Essential Information

MLS® #	E4449785
Price	\$598,800
Bedrooms	3
Bathrooms	3.50
Full Baths	3
Half Baths	1
Square Footage	1,927



Acres	0.00
Year Built	2021
Type	Single Family
Sub-Type	Residential Attached
Style	2 Storey
Status	Active

### Community Information

Address	7819 Yorke Road
Area	Edmonton
Subdivision	Blatchford Area
City	Edmonton
County	ALBERTA
Province	AB
Postal Code	T5G 2R6

### Amenities

Amenities	Ceiling 9 ft., Insulation-Upgraded, See Remarks, Green Building, HRV System, Rooftop Deck/Patio
Parking Spaces	2
Parking	Double Garage Detached

### Interior

Interior Features	ensuite bathroom
Appliances	Dishwasher-Built-In, Dryer, Hood Fan, Oven-Microwave, Refrigerator, Washer, Window Coverings, Stove-Induction
Heating	Heat Pump, Geo Thermal
Stories	3
Has Basement	Yes
Basement	Full, Unfinished

### Exterior

Exterior	Wood, Brick, Stone
Exterior Features	Back Lane, Fenced, Flat Site, Landscaped, Low Maintenance Landscape, Paved Lane, Playground Nearby, Public Transportation, Schools, Shopping Nearby, See Remarks
Roof	Asphalt Shingles
Construction	Wood, Brick, Stone
Foundation	Concrete Perimeter

**Additional Information**

Date Listed                July 25th, 2025  
Days on Market        6  
Zoning                    Zone 08

DATA IS DEEMED RELIABLE BUT IS NOT GUARANTEED ACCURATE BY THE REALTORS® ASSOCIATION OF EDMONTON. COPYRIGHT 2025 BY THE REALTORS® ASSOCIATION OF EDMONTON. ALL RIGHTS RESERVED.Trademarks are owned or controlled by the Canadian Real Estate Association (CREA) and identify real estate professionals who are members of CREA (REALTOR®, REALTORS®) and/or the quality of services they provide (MLS®, Multiple Listing Service®)  
Listing information last updated on July 31st, 2025 at 9:18am MDT