

\$409,395 - 310 Hawthorn Way, Leduc

MLS® #E4448886

\$409,395

3 Bedroom, 2.50 Bathroom, 1,383 sqft
Single Family on 0.00 Acres

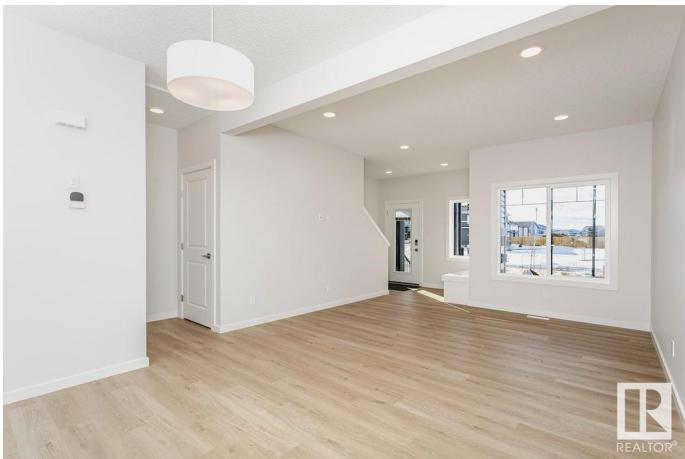
Woodbend, Leduc, AB

New built townhome by reputable builder. No Condo Fees! Open concept, 9â€™™ ceilings, with oversized windows that provide plenty of natural light. Contemporary finishes include soft-close cabinetry with 41â€™• uppers, quartz countertops, and luxury vinyl plank flooring. MDF Bench with hooks at the front entrance. Laundry room conveniently located on the second level. Rear detached double garage with a concrete driveway provides parking for 4 vehicles. Includes smart home technology system (Smart Home Hub), Ecobee thermostat, video doorbell & Weiser Wi-Fi Smart keyless lock with touch screen. Upgraded Panel, Box, & Breaker to 200 Amp Service.

Built in 2025

Essential Information

| | |
|----------------|-----------|
| MLS® # | E4448886 |
| Price | \$409,395 |
| Bedrooms | 3 |
| Bathrooms | 2.50 |
| Full Baths | 2 |
| Half Baths | 1 |
| Square Footage | 1,383 |
| Acres | 0.00 |
| Year Built | 2025 |



| | |
|----------|----------------------|
| Type | Single Family |
| Sub-Type | Residential Attached |
| Style | 2 Storey |
| Status | Active |

Community Information

| | |
|-------------|------------------|
| Address | 310 Hawthorn Way |
| Area | Leduc |
| Subdivision | Woodbend |
| City | Leduc |
| County | ALBERTA |
| Province | AB |
| Postal Code | T9E 0B1 |

Amenities

| | |
|----------------|---|
| Amenities | Ceiling 9 ft., No Animal Home, No Smoking Home, See Remarks |
| Parking Spaces | 4 |
| Parking | Double Garage Detached |

Interior

| | |
|-------------------|---------------------------|
| Interior Features | ensuite bathroom |
| Appliances | None |
| Heating | Forced Air-1, Natural Gas |
| Stories | 2 |
| Has Basement | Yes |
| Basement | Full, Unfinished |

Exterior

| | |
|-------------------|---|
| Exterior | Wood, Vinyl |
| Exterior Features | Airport Nearby, Golf Nearby, Park/Reserve, Playground Nearby, Public Swimming Pool, Public Transportation, Schools, Shopping Nearby |
| Roof | Asphalt Shingles |
| Construction | Wood, Vinyl |
| Foundation | Concrete Perimeter |

Additional Information

| | |
|----------------|-----------------|
| Date Listed | July 21st, 2025 |
| Days on Market | 58 |
| Zoning | Zone 81 |

DATA IS DEEMED RELIABLE BUT IS NOT GUARANTEED ACCURATE BY THE REALTORS® ASSOCIATION OF EDMONTON. COPYRIGHT 2025 BY THE REALTORS® ASSOCIATION OF EDMONTON. ALL RIGHTS RESERVED.Trademarks are owned or controlled by the Canadian Real Estate Association (CREA) and identify real estate professionals who are members of CREA (REALTOR®, REALTORS®) and/or the quality of services they provide (MLS®, Multiple Listing Service®)

Listing information last updated on September 17th, 2025 at 2:02am MDT