

# \$569,900 - 5815 185 Street, Edmonton

MLS® #E4446731

**\$569,900**

3 Bedroom, 2.50 Bathroom, 2,238 sqft  
Single Family on 0.00 Acres

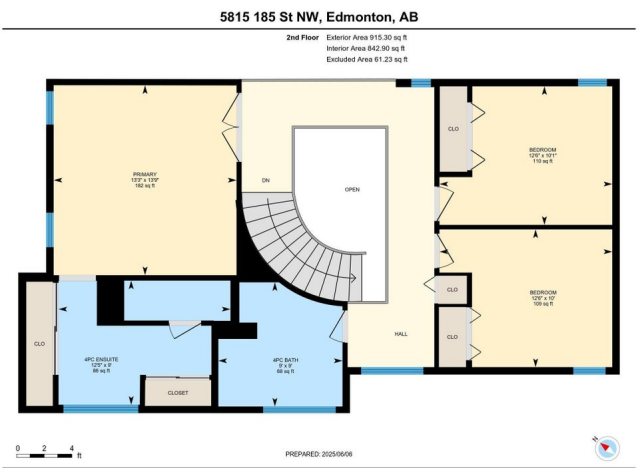
Jamieson Place, Edmonton, AB

This well-maintained 2-storey home in the Jamieson Place community boasts 3420 sq. ft. of total living space, featuring 3 beds, 2.5 baths, vaulted ceiling, double attached garage, new carpet and vinyl flooring throughout. You're greeted by a spacious foyer leading to a bright living room and dining area. The kitchen boasts countertops and a new central island. The cozy living room offers a free-standing fireplace for warmth and energy efficiency, with new sliding doors opening to a sunny southwest-facing backyard. A den and 2-pc bath complete the main floor. Upstairs, you'll find 3 bedrooms and a 4-pc shared bath, with the primary bedroom featuring a 4-pc ensuite. The fully finished basement expands your living options with a large family room, an oversized recreation room, and plenty of storage space. Upgrades: Shingles (2023), Furnace (2025), Water Tank (2025), Garage Door (2025), Front Door (2025), all house flooring (2025), 50-60% windows (2017), and most basement (2025)

Built in 1981

## Essential Information

MLS® #	E4446731
Price	\$569,900
Bedrooms	3



Bathrooms	2.50
Full Baths	2
Half Baths	1
Square Footage	2,238
Acres	0.00
Year Built	1981
Type	Single Family
Sub-Type	Detached Single Family
Style	2 Storey
Status	Active

### Community Information

Address	5815 185 Street
Area	Edmonton
Subdivision	Jamieson Place
City	Edmonton
County	ALBERTA
Province	AB
Postal Code	T6M 1Y1

### Amenities

Amenities	Deck, Detectors Smoke, No Animal Home, No Smoking Home, Skylight
Parking	Double Garage Attached

### Interior

Interior Features	ensuite bathroom
Appliances	Dryer, Hood Fan, Refrigerator, Stove-Electric, Washer
Heating	Forced Air-1, Natural Gas
Stories	3
Has Basement	Yes
Basement	Full, Finished

### Exterior

Exterior	Wood, Stucco
Exterior Features	Fenced, Landscaped, Playground Nearby, Public Transportation, Schools, Shopping Nearby
Roof	Asphalt Shingles
Construction	Wood, Stucco
Foundation	Concrete Perimeter

**Additional Information**

Date Listed                July 9th, 2025  
Days on Market        7  
Zoning                    Zone 20

DATA IS DEEMED RELIABLE BUT IS NOT GUARANTEED ACCURATE BY THE REALTORS® ASSOCIATION OF EDMONTON. COPYRIGHT 2025 BY THE REALTORS® ASSOCIATION OF EDMONTON. ALL RIGHTS RESERVED.Trademarks are owned or controlled by the Canadian Real Estate Association (CREA) and identify real estate professionals who are members of CREA (REALTOR®, REALTORS®) and/or the quality of services they provide (MLS®, Multiple Listing Service®)  
Listing information last updated on July 16th, 2025 at 1:32pm MDT