

\$234,990 - 25 2505 42 Street, Edmonton

MLS® #E4445658

\$234,990

2 Bedroom, 1.50 Bathroom, 1,173 sqft

Condo / Townhouse on 0.00 Acres

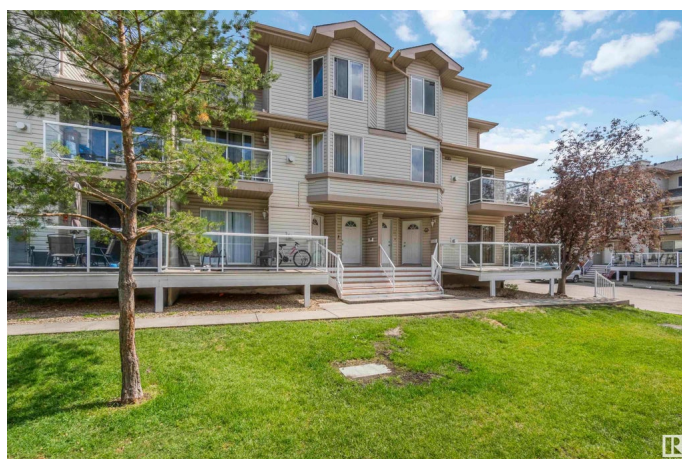
Bisset, Edmonton, AB

*Fully Renovated (Corner Unit), Very Well Maintained 2-Storey Condo in Desirable Bisset! This bright and spacious 2 bedroom, 1.5 bathroom condo is perfectly situated in the sought-after neighbourhood of Bisset. With brand new appliances, this home is move-in ready and offers exceptional value. *Main Floor Features: - Wide open living area with a beautiful tile surround gas fireplace—perfect for cozy evenings. - A newly upgraded kitchen with ample cupboard & counter space plus a raised eating bar that flows into a comfortable dining area. - Convenient 2-piece bathroom & laundry area on the main level. - Good-sized balcony—ideal for entertaining or relaxing. *Upstairs Highlights: - Two generously sized bedrooms with plenty of natural light. - A full 4-piece bathroom completes the upper level. *Prime Location: Close to schools, parks, shopping, transit, and all other amenities. This condo must be seen to be fully appreciated—it won't last long!

Built in 2002

Essential Information

MLS® #	E4445658
Price	\$234,990
Bedrooms	2
Bathrooms	1.50



Full Baths	1
Half Baths	1
Square Footage	1,173
Acres	0.00
Year Built	2002
Type	Condo / Townhouse
Sub-Type	Townhouse
Style	2 Storey
Status	Active

Community Information

Address	25 2505 42 Street
Area	Edmonton
Subdivision	Bisset
City	Edmonton
County	ALBERTA
Province	AB
Postal Code	T6L 7G8

Amenities

Amenities	Parking-Visitor, See Remarks, Vacuum System-Roughed-In
Parking Spaces	1
Parking	Stall

Interior

Interior Features	ensuite bathroom
Appliances	Dishwasher-Built-In, Hood Fan, Refrigerator, Stacked Washer/Dryer, Stove-Electric, Microwave Hood Fan-Two, Curtains and Blinds
Heating	Forced Air-1, Natural Gas
Stories	2
Has Basement	Yes
Basement	None, No Basement

Exterior

Exterior	Wood, Vinyl
Exterior Features	Playground Nearby, Public Transportation, Schools, Shopping Nearby
Roof	Asphalt Shingles
Construction	Wood, Vinyl
Foundation	Concrete Perimeter

School Information

Elementary	Bisset
Middle	Kate Chegyn
High	J. Percy Page

Additional Information

Date Listed	July 3rd, 2025
Days on Market	6
Zoning	Zone 29
Condo Fee	\$206

DATA IS DEEMED RELIABLE BUT IS NOT GUARANTEED ACCURATE BY THE REALTORS® ASSOCIATION OF EDMONTON. COPYRIGHT 2025 BY THE REALTORS® ASSOCIATION OF EDMONTON. ALL RIGHTS RESERVED.Trademarks are owned or controlled by the Canadian Real Estate Association (CREA) and identify real estate professionals who are members of CREA (REALTOR®, REALTORS®) and/or the quality of services they provide (MLS®, Multiple Listing Service®)

Listing information last updated on July 9th, 2025 at 12:47am MDT