

\$450,000 - 9448 151 Street, Edmonton

MLS® #E4444377

\$450,000

4 Bedroom, 2.00 Bathroom, 1,047 sqft
Single Family on 0.00 Acres

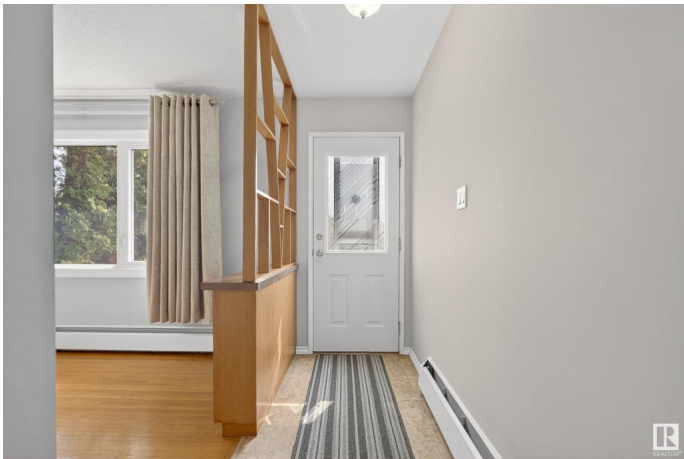
Sherwood, Edmonton, AB

If you had one shot, one opportunity, to buy that one house youâ€™ve always wanted in Sherwoodâ€”would you capture it or let it slip? This upgraded bungalow blends comfort, functionality, and charmâ€”sitting on a nearly 50' x 148' lot with room to live and grow. The spacious 22' x 27' garage (2018) and fully landscaped backyard offer incredible outdoor appeal, complete with a newer sidewalk (2021) and refreshed fencing (2017 & 2020). Inside, the main floor features a bright living room with large windows, a welcoming kitchen with ample cabinet space, 2 bedrooms, and a full bath. The finished basement adds 2 more bedrooms, a 3-piece bath, laundry, wet bar, and a large family roomâ€”perfect for movie nights or hosting guests. Thoughtful upgrades include triple-pane windows, R60 attic insulation, new soffits/fascia/eavestroughs (2023), shingles (2018), hot water tank (2022), and lush landscaping (2021â€“2022). A true turnkey gem!

Built in 1962

Essential Information

MLS® #	E4444377
Price	\$450,000
Bedrooms	4
Bathrooms	2.00



Full Baths	2
Square Footage	1,047
Acres	0.00
Year Built	1962
Type	Single Family
Sub-Type	Detached Single Family
Style	Bungalow
Status	Active

Community Information

Address	9448 151 Street
Area	Edmonton
Subdivision	Sherwood
City	Edmonton
County	ALBERTA
Province	AB
Postal Code	T5R 1K3

Amenities

Amenities	Detectors Smoke, Fire Pit, Vinyl Windows, Wet Bar
Parking	Double Garage Detached, Over Sized

Interior

Appliances	Dishwasher-Built-In, Dryer, Microwave Hood Fan, Refrigerator, Stove-Electric, Washer
Heating	Baseboard, Natural Gas
Stories	2
Has Basement	Yes
Basement	Full, Finished

Exterior

Exterior	Wood, Metal, Stucco
Exterior Features	Back Lane, Fenced, Fruit Trees/Shrubs, Landscaped, Playground Nearby, Public Transportation, Schools, Shopping Nearby
Roof	Asphalt Shingles
Construction	Wood, Metal, Stucco
Foundation	Concrete Perimeter

Additional Information

Date Listed June 26th, 2025

Days on Market 11

Zoning Zone 22

DATA IS DEEMED RELIABLE BUT IS NOT GUARANTEED ACCURATE BY THE REALTORS® ASSOCIATION OF EDMONTON. COPYRIGHT 2025 BY THE REALTORS® ASSOCIATION OF EDMONTON. ALL RIGHTS RESERVED. Trademarks are owned or controlled by the Canadian Real Estate Association (CREA) and identify real estate professionals who are members of CREA (REALTOR®, REALTORS®) and/or the quality of services they provide (MLS®, Multiple Listing Service®)

Listing information last updated on July 7th, 2025 at 7:02am MDT