

## \$350,000 - 10901 158 Street, Edmonton

MLS® #E4442526

**\$350,000**

3 Bedroom, 1.00 Bathroom, 934 sqft

Single Family on 0.00 Acres

Mayfield, Edmonton, AB

Excellent development potential and investment opportunity. Quiet location with wide street. Corner lot with front drive and back alley access. 54' x 120' lot. Nice 3 Bedroom Bungalow with Attached Garage. Renovated inside. Close to School and easy access to all amenities. Currently with Tenants till August 1. Don't miss out this fantastic property in Mayfield.

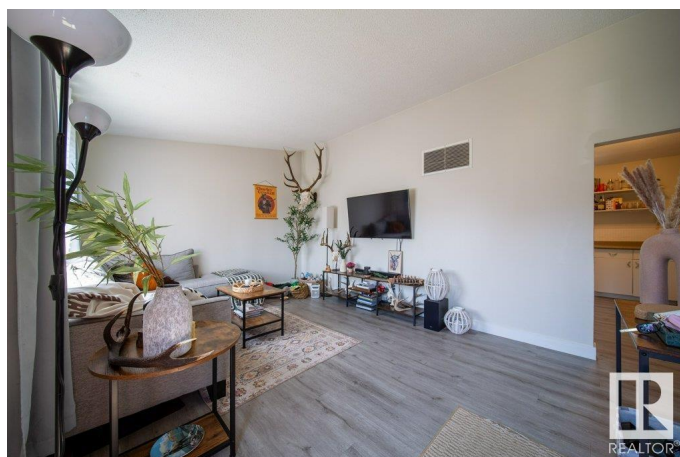
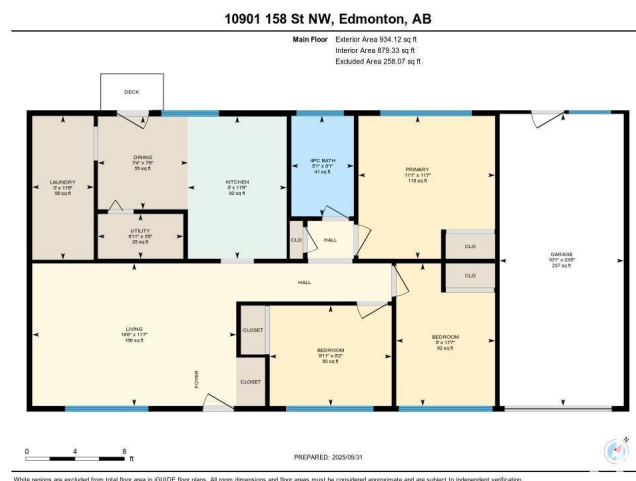
Built in 1955

### Essential Information

|                |                        |
|----------------|------------------------|
| MLS® #         | E4442526               |
| Price          | \$350,000              |
| Bedrooms       | 3                      |
| Bathrooms      | 1.00                   |
| Full Baths     | 1                      |
| Square Footage | 934                    |
| Acres          | 0.00                   |
| Year Built     | 1955                   |
| Type           | Single Family          |
| Sub-Type       | Detached Single Family |
| Style          | Bungalow               |
| Status         | Active                 |

### Community Information

|         |                  |
|---------|------------------|
| Address | 10901 158 Street |
| Area    | Edmonton         |



|             |          |
|-------------|----------|
| Subdivision | Mayfield |
| City        | Edmonton |
| County      | ALBERTA  |
| Province    | AB       |
| Postal Code | T5P 2Y8  |

### Amenities

|                |                                    |
|----------------|------------------------------------|
| Amenities      | On Street Parking, Detectors Smoke |
| Parking Spaces | 2                                  |
| Parking        | Single Garage Attached             |

### Interior

|              |   |
|--------------|---|
| Appliances   | Dryer, Refrigerator, Storage Shed, Stove-Electric, Washer |
| Heating      | Forced Air-1, Natural Gas                                 |
| Stories      | 1   |
| Has Basement | Yes   |
| Basement     | None, No Basement   |

### Exterior

|                   |  |
|-------------------|--|
| Exterior          | Wood, Vinyl  |
| Exterior Features | Back Lane, Corner Lot, Fenced, Flat Site, Landscaped, Playground Nearby, Public Transportation, Schools, Shopping Nearby |
| Roof              | Asphalt Shingles   |
| Construction      | Wood, Vinyl  |
| Foundation        | Concrete Perimeter   |

### School Information

|            |                            |
|------------|----------------------------|
| Elementary | Mayfield,Our Lady of Peace |
| Middle     | Briannia,St.Thomas More    |
| High       | R.Sheppard,St.F X          |

### Additional Information

|                |                 |
|----------------|-----------------|
| Date Listed    | June 12th, 2025 |
| Days on Market | 3               |
| Zoning         | Zone 21         |

DATA IS DEEMED RELIABLE BUT IS NOT GUARANTEED ACCURATE BY THE REALTORS® ASSOCIATION OF EDMONTON. COPYRIGHT 2025 BY THE REALTORS® ASSOCIATION OF EDMONTON. ALL RIGHTS RESERVED.Trademarks are owned or controlled by the Canadian Real Estate Association (CREA) and identify real estate professionals who are members of CREA (REALTOR®, REALTORS®) and/or the quality of services they provide (MLS®, Multiple Listing Service®)

Listing information last updated on June 15th, 2025 at 9:02pm MDT