

\$490,000 - 8034 Kiriak Link, Edmonton

MLS® #E4442330

\$490,000

3 Bedroom, 2.50 Bathroom, 1,733 sqft

Single Family on 0.00 Acres

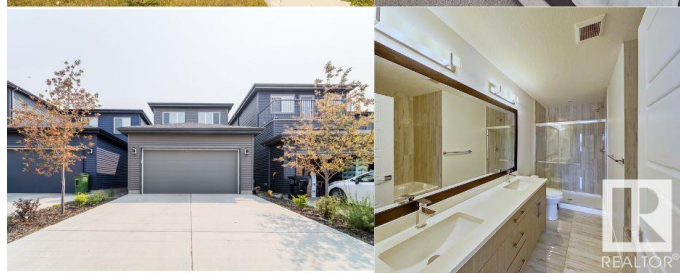
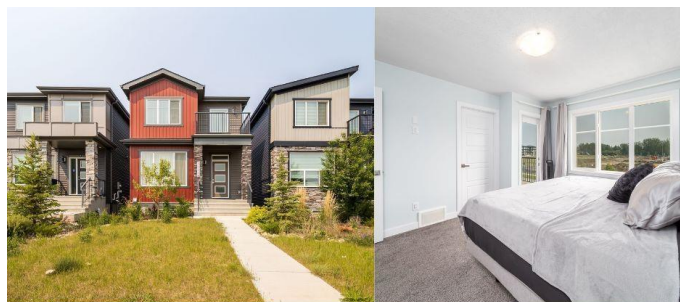
Keswick Area, Edmonton, AB

Step into this stunning 1733 sqft home in the desirable community of Keswick! This open-concept gem features 9ft ceilings, luxury vinyl plank flooring, and a striking feature fireplace wall. The chef-inspired kitchen boasts upgraded cabinets to the ceiling, quartz countertops, stainless steel appliances, and a spacious island—perfect for entertaining. Enjoy the convenience of a double attached garage, separate side entrance, and a cozy deck for outdoor relaxation. Upstairs offers 3 spacious bedrooms, a bonus room, second-floor laundry, and a luxurious 5-piece ensuite with a soaker tub, dual sinks, and tiled shower. The primary bedroom features a private balcony with an amazing view. The unfinished basement provides endless potential for customization. Located near Joey Moss K-9 School, Keswick Pond, playgrounds, and with easy access to the Henday and Airport, this home is perfect for families and future investment!

Built in 2022

Essential Information

MLS® #	E4442330
Price	\$490,000
Bedrooms	3
Bathrooms	2.50



Full Baths	2
Half Baths	1
Square Footage	1,733
Acres	0.00
Year Built	2022
Type	Single Family
Sub-Type	Detached Single Family
Style	2 Storey
Status	Active

Community Information

Address	8034 Kiriak Link
Area	Edmonton
Subdivision	Keswick Area
City	Edmonton
County	ALBERTA
Province	AB
Postal Code	T6W 4V2

Amenities

Amenities	Off Street Parking, Ceiling 9 ft., No Animal Home, No Smoking Home, Patio
Parking	Double Garage Attached

Interior

Interior Features	ensuite bathroom
Appliances	Dishwasher-Built-In, Dryer, Microwave Hood Fan, Refrigerator, Stove-Gas, Washer
Heating	Forced Air-1, Natural Gas
Stories	2
Has Basement	Yes
Basement	Full, Unfinished

Exterior

Exterior	Wood, Vinyl
Exterior Features	Airport Nearby, Back Lane, Landscaped, Low Maintenance Landscape, Playground Nearby, Public Transportation, Schools
Roof	Asphalt Shingles
Construction	Wood, Vinyl

Foundation Concrete Perimeter

School Information

Elementary Joey Moss School

Additional Information

Date Listed June 13th, 2025

Days on Market 85

Zoning Zone 56

DATA IS DEEMED RELIABLE BUT IS NOT GUARANTEED ACCURATE BY THE REALTORS® ASSOCIATION OF EDMONTON. COPYRIGHT 2025 BY THE REALTORS® ASSOCIATION OF EDMONTON. ALL RIGHTS RESERVED.Trademarks are owned or controlled by the Canadian Real Estate Association (CREA) and identify real estate professionals who are members of CREA (REALTOR®, REALTORS®) and/or the quality of services they provide (MLS®, Multiple Listing Service®)

Listing information last updated on September 6th, 2025 at 12:17pm MDT