

\$294,900 - 230 Edwards Drive, Edmonton

MLS® #E4442046

\$294,900

3 Bedroom, 1.50 Bathroom, 1,220 sqft
Condo / Townhouse on 0.00 Acres

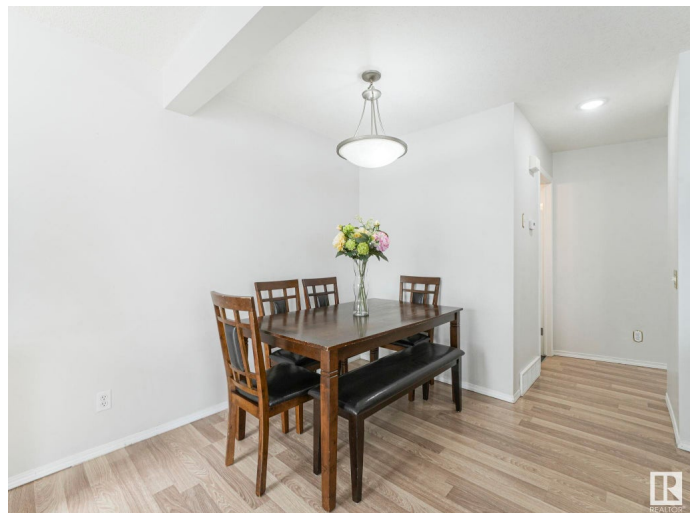
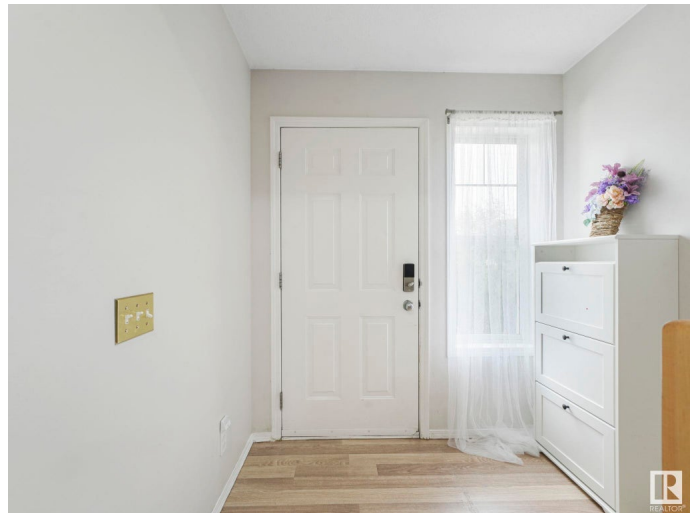
Ellerslie, Edmonton, AB

Welcome to your dream townhome in South Edmonton—where style meets function in a beautifully updated end unit, perfect for families or investors. Step inside to a bright, OPEN-CONCEPT main floor featuring a kitchen w/tons of counter space—ideal for cooking & entertaining. The kitchen flows effortlessly into the dining area & cozy living room, large windows that flood the space w/natural light & a FULLY FENCED BACKYARD to enjoy the summer breeze. Upstairs offers 3 BEDROOMS, including a huge primary suite w/a walk-in closet. A spacious 4-piece bathroom completes the upper level. Downstairs, the partly finished basement adds VALUABLE DEVELOPED SPACE w/a LARGE WINDOW—perfect as a rec room, office, or guest suite—a POTENTIAL 4TH BEDROOM. With UPDATED FLOORING THROUGHOUT, this home is truly move-in ready. Enjoy the privacy of an attached single garage w/an extra parking pad. RIGHT OFF MAJOR ROUTES & W/PUBLIC TRANSIT ACCESS, just a short drive to the Int'l airport, w/nearby schools & parks—your new home awaits!

Built in 2003

Essential Information

MLS® # E4442046



Price	\$294,900
Bedrooms	3
Bathrooms	1.50
Full Baths	1
Half Baths	1
Square Footage	1,220
Acres	0.00
Year Built	2003
Type	Condo / Townhouse
Sub-Type	Half Duplex
Style	2 Storey
Status	Active

Community Information

Address	230 Edwards Drive
Area	Edmonton
Subdivision	Ellerslie
City	Edmonton
County	ALBERTA
Province	AB
Postal Code	T6X 1G7

Amenities

Amenities	No Animal Home, No Smoking Home
Parking Spaces	2
Parking	Single Garage Attached

Interior

Appliances	Dishwasher-Built-In, Dryer, Microwave Hood Fan, Refrigerator, Stove-Electric, Washer
Heating	Forced Air-1, Natural Gas
Stories	3
Has Basement	Yes
Basement	Full, Partially Finished

Exterior

Exterior	Concrete, Stone, Vinyl
Exterior Features	Airport Nearby, Commercial, Fenced, Landscaped, Playground Nearby, Schools, Shopping Nearby

Roof	Asphalt Shingles
Construction	Concrete, Stone, Vinyl
Foundation	Concrete Perimeter

School Information

Elementary	Sakaw School
Middle	Kisāwā̃tisiwin School
High	J. Percy Page School

Additional Information

Date Listed	June 12th, 2025
Days on Market	3
Zoning	Zone 53
Condo Fee	\$348

DATA IS DEEMED RELIABLE BUT IS NOT GUARANTEED ACCURATE BY THE REALTORS® ASSOCIATION OF EDMONTON. COPYRIGHT 2025 BY THE REALTORS® ASSOCIATION OF EDMONTON. ALL RIGHTS RESERVED.Trademarks are owned or controlled by the Canadian Real Estate Association (CREA) and identify real estate professionals who are members of CREA (REALTOR®, REALTORS®) and/or the quality of services they provide (MLS®, Multiple Listing Service®)

Listing information last updated on June 15th, 2025 at 6:32pm MDT