

\$427,900 - 5217 Crabapple Link, Edmonton

MLS® #E4441884

\$427,900

3 Bedroom, 2.50 Bathroom, 1,284 sqft

Single Family on 0.00 Acres

The Orchards At Ellerslie, Edmonton, AB

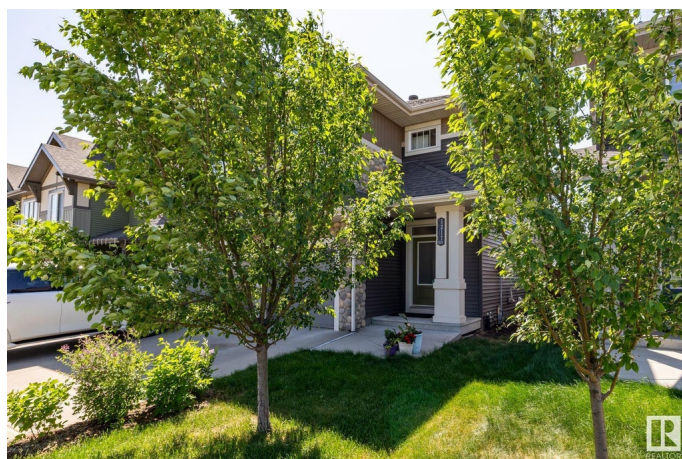
Welcome to this spacious 3-bedroom 2.5 bath, 1285 sf half duplex in the heart of family friendly neighbourhood - The Orchards. Main floor Open Concept features Living Rm, Dining Rm, Kitchen & Powder Rm, large windows casting a southern flow of natural light. Kitchen has a large island with upgraded quartz counter tops, upgraded cabinets to ceiling, S/S ceramic top electric stove, B/I dishwasher, refrigerator & microwave hood fan, ceramic tile & laminate flooring, access to attached garage complete the main floor. The wide stairway to the 2nd level features a large primary bedroom with W/I closet, 4 pc ensuite & large windows, 2 generous sized additional bedrooms, 4 pc bath & dedicated laundry room complete the 2nd level. Basement is full but unfinished & offers plenty of space for storage and/or future development. Newer HWT 2023 . Steps away from a walking trail. Minutes away from clubhouse, playground, spray park, skating rink, school, Anthony Henday, Whitemud Drive & all major amenities.

Built in 2016

Essential Information

MLS® # E4441884

Price \$427,900



Bedrooms	3
Bathrooms	2.50
Full Baths	2
Half Baths	1
Square Footage	1,284
Acres	0.00
Year Built	2016
Type	Single Family
Sub-Type	Half Duplex
Style	2 Storey
Status	Active

Community Information

Address	5217 Crabapple Link
Area	Edmonton
Subdivision	The Orchards At Ellerslie
City	Edmonton
County	ALBERTA
Province	AB
Postal Code	T6X 2H6

Amenities

Amenities	Club House, Deck, Detectors Smoke, Exterior Walls- 2"x6", Hot Water Natural Gas, No Animal Home, No Smoking Home, Vinyl Windows
Parking Spaces	2
Parking	Single Garage Attached

Interior

Interior Features	ensuite bathroom
Appliances	Alarm/Security System, Dishwasher-Built-In, Dryer, Hood Fan, Refrigerator, Stove-Electric, Washer, Window Coverings
Heating	Forced Air-1, Natural Gas
Stories	2
Has Basement	Yes
Basement	Full, Unfinished

Exterior

Exterior	Wood, Stone, Vinyl
Exterior Features	Airport Nearby, Fenced, Flat Site, Golf Nearby, No Back Lane,

Park/Reserve, Picnic Area, Public Transportation, Recreation Use, Schools, Shopping Nearby

Roof	Asphalt Shingles
Construction	Wood, Stone, Vinyl
Foundation	Concrete Perimeter

School Information

Elementary	Divine Mercy Catholic Elem
Middle	Jan Reimer PK-8

Additional Information

Date Listed	June 12th, 2025
Days on Market	3
Zoning	Zone 53
HOA Fees	450
HOA Fees Freq.	Annually

DATA IS DEEMED RELIABLE BUT IS NOT GUARANTEED ACCURATE BY THE REALTORS® ASSOCIATION OF EDMONTON. COPYRIGHT 2025 BY THE REALTORS® ASSOCIATION OF EDMONTON. ALL RIGHTS RESERVED. Trademarks are owned or controlled by the Canadian Real Estate Association (CREA) and identify real estate professionals who are members of CREA (REALTOR®, REALTORS®) and/or the quality of services they provide (MLS®, Multiple Listing Service®)

Listing information last updated on June 15th, 2025 at 2:47pm MDT