

# \$359,900 - 7124 80 Avenue, Edmonton

MLS® #E4438075

## \$359,900

2 Bedroom, 1.00 Bathroom, 769 sqft  
Single Family on 0.00 Acres

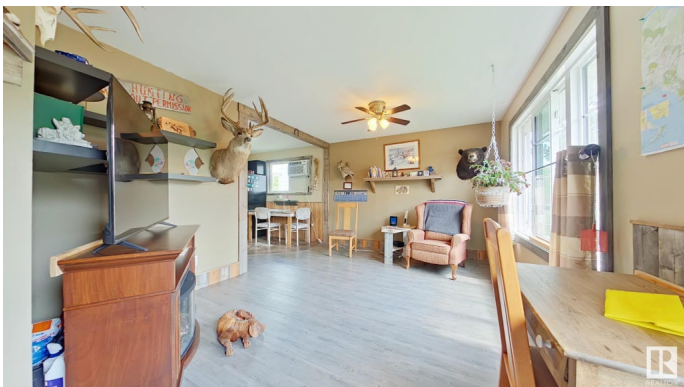
King Edward Park, Edmonton, AB

Investor Alert in King Edward Park!  
Opportunity knocks with this charming 2-bedroom, 1-bathroom single-family home in the highly sought-after community of King Edward Park. Situated on a spacious lot with a large backyard, this property is full of potential—perfect for redevelopment, a rental investment, or future infill. Located just minutes from Whyte Avenue, the Mill Creek Ravine, and the University of Alberta, this location offers excellent walkability, access to transit, and close proximity to schools, shopping, and restaurants. Whether you're looking to hold, renovate, or rebuild, this is a rare find in one of Edmonton's most vibrant and in-demand neighbourhoods. Don't miss this incredible investment opportunity!

Built in 1958

### Essential Information

MLS® #	E4438075
Price	\$359,900
Bedrooms	2
Bathrooms	1.00
Full Baths	1
Square Footage	769
Acres	0.00
Year Built	1958



Type	Single Family
Sub-Type	Detached Single Family
Style	Bungalow
Status	Active

### Community Information

Address	7124 80 Avenue
Area	Edmonton
Subdivision	King Edward Park
City	Edmonton
County	ALBERTA
Province	AB
Postal Code	T6B 0C6

### Amenities

Amenities	See Remarks
Parking	Parking Pad Cement/Paved

### Interior

Appliances	See Remarks
Heating	Forced Air-1, Natural Gas
Stories	1
Has Basement	Yes
Basement	Partial, Unfinished

### Exterior

Exterior	Wood, Stucco
Exterior Features	Fenced, Landscaped
Roof	Asphalt Shingles
Construction	Wood, Stucco
Foundation	Concrete Perimeter

### Additional Information

Date Listed	May 23rd, 2025
Days on Market	24
Zoning	Zone 17

DATA IS DEEMED RELIABLE BUT IS NOT GUARANTEED ACCURATE BY THE REALTORS® ASSOCIATION OF EDMONTON. COPYRIGHT 2025 BY THE REALTORS® ASSOCIATION OF EDMONTON. ALL RIGHTS RESERVED. Trademarks are owned or controlled by the Canadian Real Estate Association (CREA) and identify real estate professionals who are members of CREA (REALTOR®, REALTORS®) and/or the quality of services they

provide (MLS®®, Multiple Listing Service®®)  
Listing information last updated on June 16th, 2025 at 6:17am MDT