

\$235,000 - 109 3040 Spence Wynd, Edmonton

MLS® #E4437212

\$235,000

2 Bedroom, 1.00 Bathroom, 1,006 sqft

Condo / Townhouse on 0.00 Acres

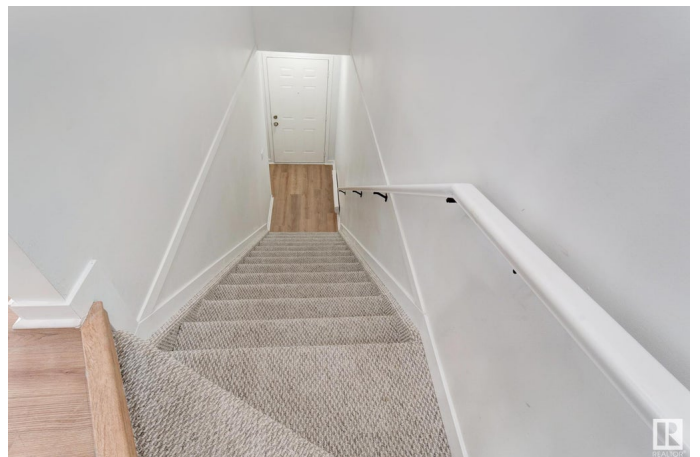
Summerside, Edmonton, AB

Show Stopper! This fully Renovated Condo at Lake Summerside will surely impress you. This 2 bed 1 bath upper unit boats, new flooring throughout. New Kitchen Cabinets & new countertops. Stainless steel appliances. New paint, New Carpet on the stairs and new flooring & counter top in the bathroom! No work needed this unit is NEW, NEW, NEW! Plus you will also get full access to Summerside Beach club. Which includes amenities such as lake access, Rinks, Fishing, Tennis and pickleball courts, mini golf, volleyball, basketball courts, boats, and a community playground. Plus you are in walking distance to 2 schools. The location is very convenient with easy access to major grocery stores and shopping within a 5 min drive. This property is perfect for families and is a must see!

Built in 2005

Essential Information

MLS® #	E4437212
Price	\$235,000
Bedrooms	2
Bathrooms	1.00
Full Baths	1
Square Footage	1,006
Acres	0.00



Year Built	2005
Type	Condo / Townhouse
Sub-Type	Carriage
Style	Bungalow
Status	Active

Community Information

Address	109 3040 Spence Wynd
Area	Edmonton
Subdivision	Summerside
City	Edmonton
County	ALBERTA
Province	AB
Postal Code	T6X 1N7

Amenities

Amenities	Lake Privileges
Parking	Stall

Interior

Appliances	Dishwasher-Built-In, Dryer, Hood Fan, Refrigerator, Stove-Countertop Electric, Washer
Heating	Forced Air-1, Natural Gas
Stories	1
Has Basement	Yes
Basement	None, No Basement

Exterior

Exterior	Concrete, Vinyl
Exterior Features	Lake Access Property
Roof	Asphalt Shingles
Construction	Concrete, Vinyl
Foundation	Concrete Perimeter

Additional Information

Date Listed	May 17th, 2025
Days on Market	7
Zoning	Zone 53
HOA Fees	461.28

HOA Fees Freq. Annually

Condo Fee \$313

DATA IS DEEMED RELIABLE BUT IS NOT GUARANTEED ACCURATE BY THE REALTORS® ASSOCIATION OF EDMONTON. COPYRIGHT 2025 BY THE REALTORS® ASSOCIATION OF EDMONTON. ALL RIGHTS RESERVED. Trademarks are owned or controlled by the Canadian Real Estate Association (CREA) and identify real estate professionals who are members of CREA (REALTOR®, REALTORS®) and/or the quality of services they provide (MLS®, Multiple Listing Service®)

Listing information last updated on May 24th, 2025 at 9:17am MDT