

## \$249,900 - 142 Lee Ridge Road, Edmonton

MLS® #E4435392

**\$249,900**

3 Bedroom, 1.50 Bathroom, 1,390 sqft

Condo / Townhouse on 0.00 Acres

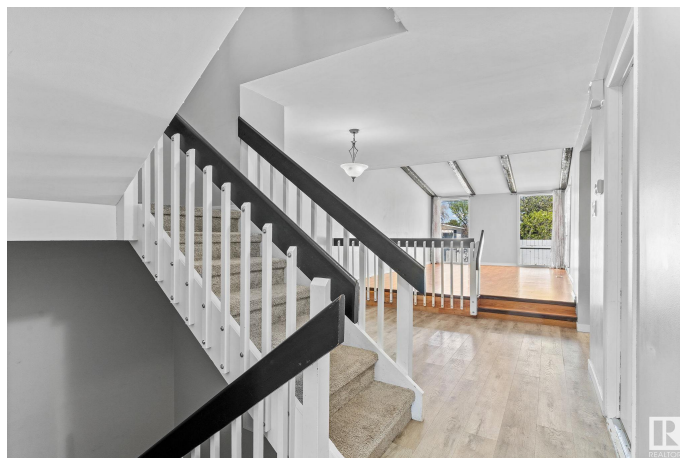
Lee Ridge, Edmonton, AB

ATTENTION FIRST TIME HOME BUYERS & INVESTORS! This conveniently located & excellent floor plan with 3 bedrooms and 1.5 baths is a must see! Vaulted living room ceilings, bright spaces and attached garage! Your very own yard with french doors to the deck! Why rent when you can purchase and start building equity while having enough space for everyone (and your car will be warm during the winter!). Located near schools, a Montessori center and more! The rec centre can be reached with the accessibly transit nearby! \*some images virtually staged\*

Built in 1975

### Essential Information

MLS® #	E4435392
Price	\$249,900
Bedrooms	3
Bathrooms	1.50
Full Baths	1
Half Baths	1
Square Footage	1,390
Acres	0.00
Year Built	1975
Type	Condo / Townhouse
Sub-Type	Townhouse
Style	2 Storey



Status Active

### Community Information

Address 142 Lee Ridge Road  
Area Edmonton  
Subdivision Lee Ridge  
City Edmonton  
County ALBERTA  
Province AB  
Postal Code T6K 0M9

### Amenities

Amenities Deck, Secured Parking, Storage-In-Suite, See Remarks  
Parking Spaces 2  
Parking Single Garage Attached

### Interior

Interior Features ensuite bathroom  
Appliances Dishwasher-Built-In, Dryer, Garage Control, Garage Opener, Microwave Hood Fan, Refrigerator, Stove-Electric, Washer, Window Coverings  
Heating Forced Air-1, Natural Gas  
Stories 2  
Has Basement Yes  
Basement Full, Unfinished

### Exterior

Exterior Wood, Vinyl  
Exterior Features Fenced, Flat Site, Golf Nearby, Landscaped, Playground Nearby, Public Transportation, Schools, Shopping Nearby  
Roof Asphalt Shingles  
Construction Wood, Vinyl  
Foundation Concrete Perimeter

### School Information

Elementary Lee Ridge School  
Middle Edith Rogers School  
High W. P. Wagner School

### Additional Information

Date Listed May 8th, 2025

Days on Market	1
Zoning	Zone 29
Condo Fee	\$300

DATA IS DEEMED RELIABLE BUT IS NOT GUARANTEED ACCURATE BY THE REALTORS® ASSOCIATION OF EDMONTON. COPYRIGHT 2025 BY THE REALTORS® ASSOCIATION OF EDMONTON. ALL RIGHTS RESERVED. Trademarks are owned or controlled by the Canadian Real Estate Association (CREA) and identify real estate professionals who are members of CREA (REALTOR®, REALTORS®) and/or the quality of services they provide (MLS®, Multiple Listing Service®)

Listing information last updated on May 9th, 2025 at 6:32pm MDT