

# \$499,555 - 18465 121 Avenue, Edmonton

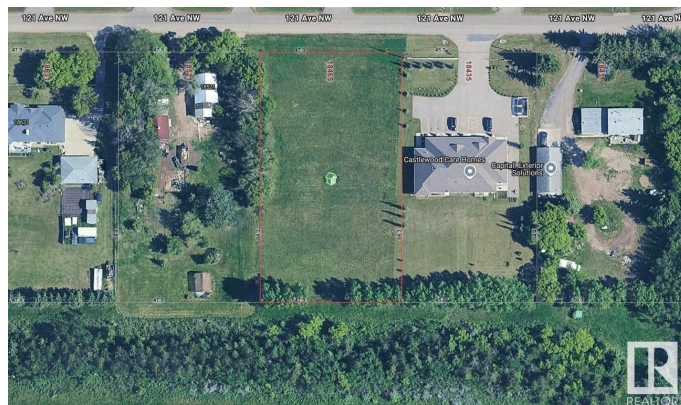
MLS® #E4435389

**\$499,555**

0 Bedroom, 0.00 Bathroom,  
Single Family on 0.00 Acres

Kinokamau Plains Area, Edmonton, AB

Custom build your very own dream home with a BIG SHOP? Or simply looking for a quiet acreage but do not want to be too far from the city? Here is a 1 acre of land with endless opportunities! Don't miss this incredible opportunity to own a rare 1-acre parcel in Northwest Edmonton, just 7 km from West Edmonton Mall & only a couple minutes to public transit! Enjoy ultra-convenient access to the Anthony Henday and Yellowhead Highway, making commuting a breeze. With flexible RR zoning, this lot offers endless potential for development or investment. Spacious dimensions of 157.1 ft x 276.7 ft make it a prime piece of real estate in a highly desirable location.



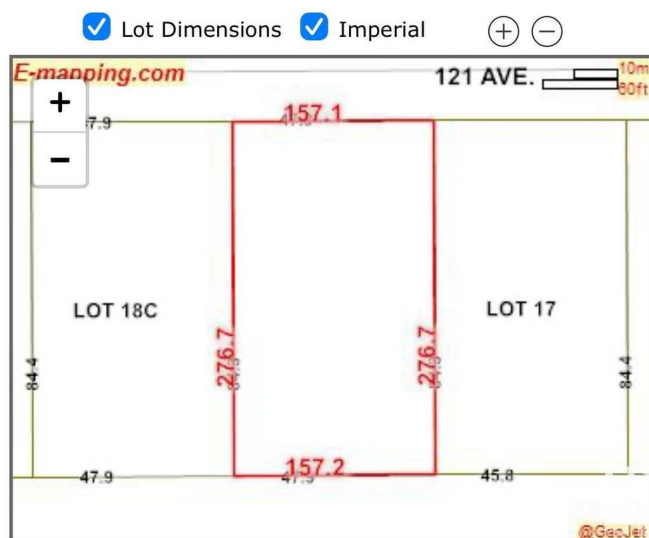
**Property Address: 18465 121 Avenue, EDMONTON T5V1R2**

## Essential Information

MLS® #	E4435389
Price	\$499,555
Bathrooms	0.00
Acres	0.00
Type	Single Family
Sub-Type	Vacant Lot/Land
Status	Active

## Community Information

Address 18465 121 Avenue



Area	Edmonton
Subdivision	Kinokamau Plains Area
City	Edmonton
County	ALBERTA
Province	AB
Postal Code	T5V 1R2

## Exterior

Exterior Features	Shopping Nearby
Lot Description	157.1 ft x 276.7 ft

## Additional Information

Date Listed	May 5th, 2025
Days on Market	5
Zoning	Zone 40

DATA IS DEEMED RELIABLE BUT IS NOT GUARANTEED ACCURATE BY THE REALTORS® ASSOCIATION OF EDMONTON. COPYRIGHT 2025 BY THE REALTORS® ASSOCIATION OF EDMONTON. ALL RIGHTS RESERVED. Trademarks are owned or controlled by the Canadian Real Estate Association (CREA) and identify real estate professionals who are members of CREA (REALTOR®, REALTORS®) and/or the quality of services they provide (MLS®, Multiple Listing Service®)

Listing information last updated on May 10th, 2025 at 12:02am MDT