

\$929,888 - 152 Weber Close, Edmonton

MLS® #E4435332

\$929,888

3 Bedroom, 2.50 Bathroom, 1,912 sqft

Single Family on 0.00 Acres

Wedgewood Heights, Edmonton, AB

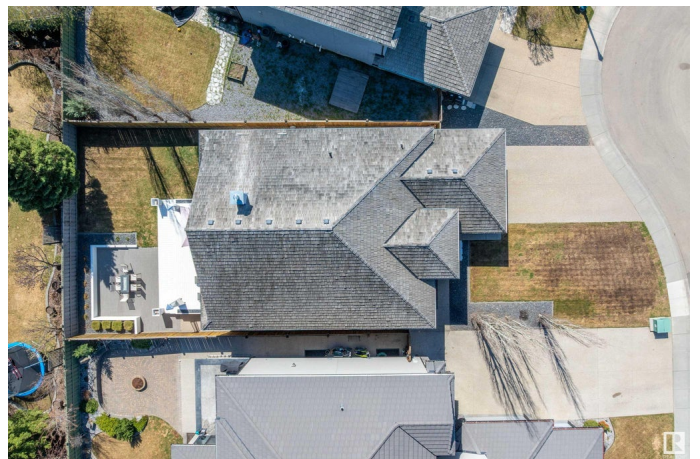
Welcome to this stunning custom-built 1911 sq ft luxury bungalow in prestigious Wedgewood! Crafted for elegance & comfort, this open-concept home showcases soaring ceilings, oversized windows, sleek linear fireplace, & central A/C. The chef's kitchen impresses with quartz counters, high-end stainless-steel appliances, custom cabinetry, & a 9-ft island perfect for entertaining. Retreat to the luxurious primary suite with walk-in closet & spa-like ensuite featuring a freestanding tub, glass shower, & dual vanities. The fully finished basement offers in-floor heating, 2 spacious bedrooms with built-in closets, full bath, & large rec room. Enjoy the beautifully landscaped yard with private deck & patio. Oversized attached garage adds storage, 110/220V outlets, & EV-ready capability. Impeccably maintained by original owners, steps to parks, tennis courts, playgrounds, with quick access to top schools, dining, & shopping. Refined living awaits—move in & enjoy this exceptional home! A RARE OPPORTUNITY!

Built in 2012

Essential Information

MLS® # E4435332

Price \$929,888



Bedrooms	3
Bathrooms	2.50
Full Baths	2
Half Baths	1
Square Footage	1,912
Acres	0.00
Year Built	2012
Type	Single Family
Sub-Type	Detached Single Family
Style	Bungalow
Status	Active

Community Information

Address	152 Weber Close
Area	Edmonton
Subdivision	Wedgewood Heights
City	Edmonton
County	ALBERTA
Province	AB
Postal Code	T6M 0L4

Amenities

Amenities	Air Conditioner, Closet Organizers, Deck, Detectors Smoke, No Smoking Home
Parking Spaces	4
Parking	Double Garage Attached

Interior

Interior Features	ensuite bathroom
Appliances	Air Conditioning-Central, Dryer, Hood Fan, Oven-Built-In, Oven-Microwave, Refrigerator, Stove-Gas, Washer
Heating	Forced Air-1, Natural Gas
Fireplace	Yes
Fireplaces	Tile Surround, Wall Mount
Stories	2
Has Basement	Yes
Basement	Full, Finished

Exterior

Exterior	Wood, Stone, Stucco
Exterior Features	Cul-De-Sac, Fenced, Landscaped, Low Maintenance Landscape, Playground Nearby, Public Transportation, Shopping Nearby, See Remarks
Roof	Cedar Shakes
Construction	Wood, Stone, Stucco
Foundation	Concrete Perimeter

School Information

Elementary	Michael A. Kostek School
Middle	S. Bruce Smith School
High	Jasper Place School

Additional Information

Date Listed	May 8th, 2025
Days on Market	3
Zoning	Zone 20
HOA Fees	350
HOA Fees Freq.	Annually

DATA IS DEEMED RELIABLE BUT IS NOT GUARANTEED ACCURATE BY THE REALTORS® ASSOCIATION OF EDMONTON. COPYRIGHT 2025 BY THE REALTORS® ASSOCIATION OF EDMONTON. ALL RIGHTS RESERVED. Trademarks are owned or controlled by the Canadian Real Estate Association (CREA) and identify real estate professionals who are members of CREA (REALTOR®, REALTORS®) and/or the quality of services they provide (MLS®, Multiple Listing Service®)

Listing information last updated on May 11th, 2025 at 2:02am MDT