

\$615,000 - 218 Crystal Creek Drive, Leduc

MLS® #E4433937

\$615,000

3 Bedroom, 3.00 Bathroom, 2,119 sqft
Single Family on 0.00 Acres

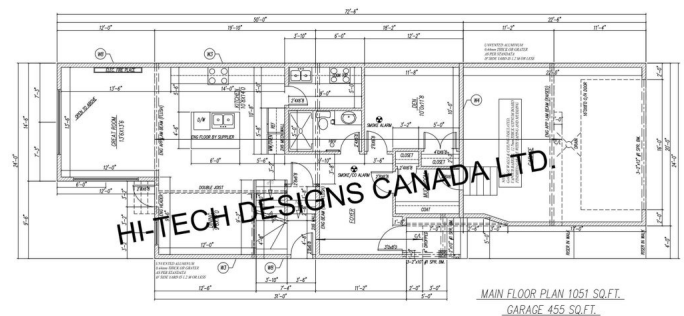
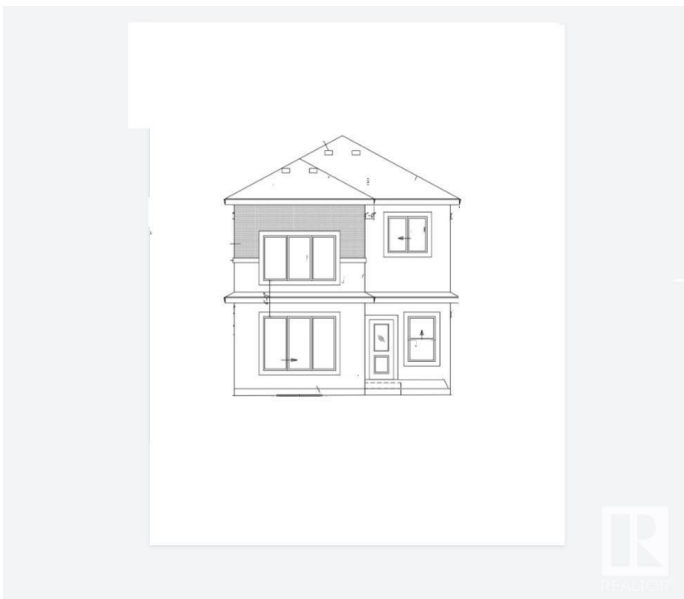
Crystal Creek_LEDU, Leduc, AB

Step into this stunning two-storey home in Leduc, designed for both style and comfort. The main floor boasts a bright and inviting living room with cozy fireplace, a spacious dining area, and a sleek kitchen. A versatile den, a 3-piece bathroom, and a mudroom add to the home's practicality. Upstairs, a bonus room with a fireplace provides the perfect space for relaxation. The upper level also includes a laundry room, a 4-piece bathroom, two well-sized bedrooms, and a luxurious primary suite with a walk-in closet and a spa-like 5-piece ensuite. Thoughtfully designed for modern living, this home is a must-see! Photos are of a completed show home and are for representation only. Selections can be customized

Built in 2025

Essential Information

MLS® #	E4433937
Price	\$615,000
Bedrooms	3
Bathrooms	3.00
Full Baths	3
Square Footage	2,119
Acres	0.00
Year Built	2025



MAIN FLOOR PLAN 1051 SQ.FT.
GARAGE 455 SQ.FT.

Type	Single Family
Sub-Type	Detached Single Family
Style	2 Storey
Status	Active

Community Information

Address	218 Crystal Creek Drive
Area	Leduc
Subdivision	Crystal Creek_LEDU
City	Leduc
County	ALBERTA
Province	AB
Postal Code	T9E 1N3

Amenities

Amenities	Detectors Smoke, No Animal Home, No Smoking Home
Parking	Double Garage Attached

Interior

Interior Features	ensuite bathroom
Appliances	See Remarks
Heating	Forced Air-1, Natural Gas
Fireplace	Yes
Fireplaces	Tile Surround
Stories	2
Has Basement	Yes
Basement	Full, Unfinished

Exterior

Exterior	Wood, Stone, Vinyl
Exterior Features	Playground Nearby, Public Transportation, Schools, Shopping Nearby
Roof	Asphalt Shingles
Construction	Wood, Stone, Vinyl
Foundation	Block

Additional Information

Date Listed	May 1st, 2025
Days on Market	138
Zoning	Zone 81

DATA IS DEEMED RELIABLE BUT IS NOT GUARANTEED ACCURATE BY THE REALTORS® ASSOCIATION OF EDMONTON. COPYRIGHT 2025 BY THE REALTORS® ASSOCIATION OF EDMONTON. ALL RIGHTS RESERVED.Trademarks are owned or controlled by the Canadian Real Estate Association (CREA) and identify real estate professionals who are members of CREA (REALTOR®, REALTORS®) and/or the quality of services they provide (MLS®, Multiple Listing Service®)

Listing information last updated on September 16th, 2025 at 7:32pm MDT