

\$659,900 - 19008 20 Avenue, Edmonton

MLS® #E4433787

\$659,900

5 Bedroom, 4.00 Bathroom, 2,370 sqft
Single Family on 0.00 Acres

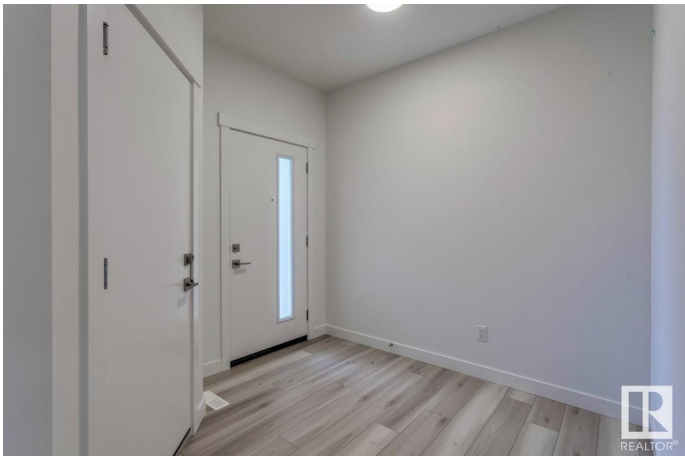
River's Edge, Edmonton, AB

This spacious 5-bedroom, 4-bathroom home offers modern living with a main floor bedroom and 3-piece bathroom with a standing shower. Upstairs, two attached ensuite bedrooms provide privacy and comfort. The home boasts a stylish spice kitchen with stainless chimney hoodfan and cabinets to the ceiling, as well as a walk-in pantry for extra storage. The main floor features durable vinyl plank flooring, while large windows allow natural light to fill the home. Enjoy elegant finishes including undermount sinks, a cozy fireplace, and sleek railings throughout. A side entrance adds extra convenience to this thoughtfully designed home.

Built in 2025

Essential Information

MLS® #	E4433787
Price	\$659,900
Bedrooms	5
Bathrooms	4.00
Full Baths	4
Square Footage	2,370
Acres	0.00
Year Built	2025
Type	Single Family
Sub-Type	Detached Single Family



Style	2 Storey
Status	Active

Community Information

Address	19008 20 Avenue
Area	Edmonton
Subdivision	River's Edge
City	Edmonton
County	ALBERTA
Province	AB
Postal Code	T6M 3A7

Amenities

Amenities	No Animal Home, No Smoking Home, See Remarks
Parking Spaces	4
Parking	Double Garage Attached

Interior

Interior Features	ensuite bathroom
Appliances	Hood Fan, Oven-Microwave
Heating	Forced Air-1, Natural Gas
Fireplace	Yes
Fireplaces	Insert
Stories	2
Has Basement	Yes
Basement	Full, Unfinished

Exterior

Exterior	Wood, Brick, Vinyl
Exterior Features	Schools, Shopping Nearby
Roof	Asphalt Shingles
Construction	Wood, Brick, Vinyl
Foundation	Concrete Perimeter

Additional Information

Date Listed	May 1st, 2025
Days on Market	46
Zoning	Zone 57

DATA IS DEEMED RELIABLE BUT IS NOT GUARANTEED ACCURATE BY THE REALTORS® ASSOCIATION OF

EDMONTON. COPYRIGHT 2025 BY THE REALTORS® ASSOCIATION OF EDMONTON. ALL RIGHTS RESERVED.Trademarks are owned or controlled by the Canadian Real Estate Association (CREA) and identify real estate professionals who are members of CREA (REALTOR®, REALTORS®) and/or the quality of services they provide (MLS®, Multiple Listing Service®)

Listing information last updated on June 16th, 2025 at 2:02pm MDT