

\$500,000 - 1160 68 Street, Edmonton

MLS® #E4432915

\$500,000

4 Bedroom, 3.00 Bathroom, 1,387 sqft

Single Family on 0.00 Acres

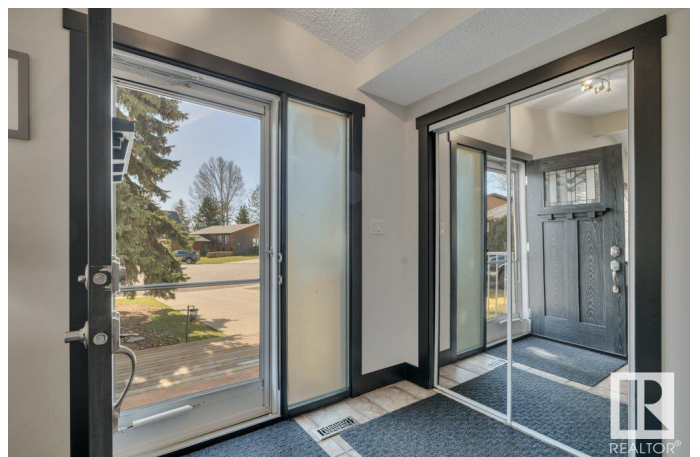
Menisa, Edmonton, AB

MARVELOUS BUNGALOW IN MENISA!!! If you are looking for a 1383 sq ft, 3+1 bedroom bungalow with 3 FULL BATHROOMS, this one is a beauty!!! AND...IT HAS 1 single garage & ONE DOUBLE GARAGE & A HUGE DRIVEWAY. RV PARKING ANYONE? A pie lot in a cul-de-sac location - this home takes family living to the next level. Enjoy a huge living room with fireplace & an updated family kitchen with GORGEOUS GRANITE, a peninsula counter, tons of cabinets, & eating & desk areas too. The Large dining room, with gorgeous light fixture is ideal for celebrations! A spacious Primary bedroom has a 3pce ensuite. Two other generous bedrooms on the main floor. Enjoy a Mud room at the rear entrance by the single attached garage. This summer enjoy cool a/c. A lovely deck, firepit, dog run & a spacious yard complete this fabulous home. Easy access to major roadways and amenities including schools, shopping & public transit.

Built in 1977

Essential Information

MLS® #	E4432915
Price	\$500,000
Bedrooms	4
Bathrooms	3.00



Full Baths	3
Square Footage	1,387
Acres	0.00
Year Built	1977
Type	Single Family
Sub-Type	Detached Single Family
Style	Bungalow
Status	Active

Community Information

Address	1160 68 Street
Area	Edmonton
Subdivision	Menisa
City	Edmonton
County	ALBERTA
Province	AB
Postal Code	T6K 3K4

Amenities

Amenities	Air Conditioner, Dog Run-Fenced In, Vinyl Windows, See Remarks
Parking Spaces	6
Parking	Double Garage Detached, Single Garage Attached

Interior

Interior Features	ensuite bathroom
Appliances	Air Conditioning-Central, Dishwasher-Built-In, Dryer, Fan-Ceiling, Garage Control, Garage Opener, Hood Fan, Storage Shed, Stove-Electric, Vacuum Systems, Washer, Window Coverings, Refrigerators-Two, TV Wall Mount
Heating	Forced Air-1, Natural Gas
Fireplaces	Brick Facing, Glass Door
Stories	2
Has Basement	Yes
Basement	Full, Finished

Exterior

Exterior	Wood, Brick, Vinyl
Exterior Features	Back Lane, Cul-De-Sac, Fenced, Golf Nearby, Landscaped, Park/Reserve, Playground Nearby, Public Transportation, Schools

Roof	Asphalt Shingles
Construction	Wood, Brick, Vinyl
Foundation	Concrete Perimeter

School Information

Elementary	Menisa School
Middle	kisÅªwÅ«tisiwin School
High	J. Percy Page High School

Additional Information

Date Listed	April 25th, 2025
Days on Market	5
Zoning	Zone 29

DATA IS DEEMED RELIABLE BUT IS NOT GUARANTEED ACCURATE BY THE REALTORSÂ® ASSOCIATION OF EDMONTON. COPYRIGHT 2025 BY THE REALTORSÂ® ASSOCIATION OF EDMONTON. ALL RIGHTS RESERVED.Trademarks are owned or controlled by the Canadian Real Estate Association (CREA) and identify real estate professionals who are members of CREA (REALTORÂ®, REALTORSÂ®) and/or the quality of services they provide (MLSÂ®, Multiple Listing ServiceÂ®)

Listing information last updated on April 30th, 2025 at 6:47pm MDT