

# \$148,800 - 332 2305 35a Avenue, Edmonton

MLS® #E4432707

**\$148,800**

1 Bedroom, 1.00 Bathroom, 637 sqft

Condo / Townhouse on 0.00 Acres

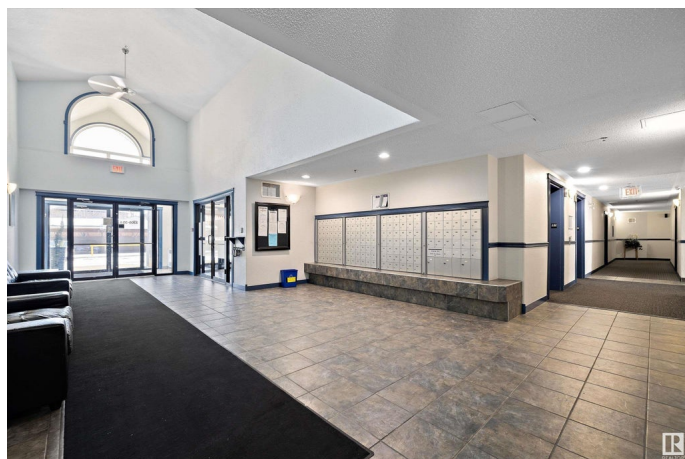
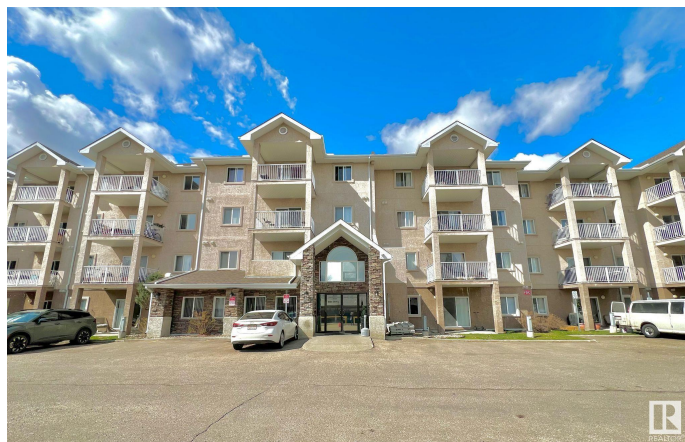
Wild Rose, Edmonton, AB

This bright and inviting condo offers a spacious open-concept layout in a fantastic location! The functional kitchen features a breakfast bar, dining area, and ample cabinetry, seamlessly flowing into the comfortable living space. The large bedroom boasts a south-facing window, filling the room with natural light. Step outside to your sunny balcony, perfect for morning coffee or evening relaxation. Additional features include in-suite laundry, a 4-piece bath, and ample storage. Enjoy the convenience of covered, energized parking and a prime location just minutes from parks, schools, shopping, dining, The Meadows Rec Centre, and all amenities. A perfect opportunity for first-time buyers, downsizers, or investorsâ€™ donâ€™t miss out!

Built in 2004

## Essential Information

MLS® #	E4432707
Price	\$148,800
Bedrooms	1
Bathrooms	1.00
Full Baths	1
Square Footage	637
Acres	0.00
Year Built	2004



Type	Condo / Townhouse
Sub-Type	Lowrise Apartment
Style	Single Level Apartment
Status	Active

### Community Information

Address	332 2305 35a Avenue
Area	Edmonton
Subdivision	Wild Rose
City	Edmonton
County	ALBERTA
Province	AB
Postal Code	T6T 1Z2

### Amenities

Amenities	Parking-Visitor, Party Room, Social Rooms, Sprinkler System-Fire, Vinyl Windows
Parking Spaces	1
Parking	Single Carport, See Remarks

### Interior

Appliances	Dryer, Refrigerator, Stove-Electric, Washer
Heating	Baseboard, Electric
# of Stories	4
Stories	1
Has Basement	Yes
Basement	None, No Basement

### Exterior

Exterior	Wood, Brick, Stucco
Exterior Features	Park/Reserve, Playground Nearby, Public Swimming Pool, Public Transportation, Schools, Shopping Nearby
Roof	Asphalt Shingles
Construction	Wood, Brick, Stucco
Foundation	Concrete Perimeter

### Additional Information

Date Listed	April 25th, 2025
Days on Market	5

Zoning	Zone 30
Condo Fee	\$398

DATA IS DEEMED RELIABLE BUT IS NOT GUARANTEED ACCURATE BY THE REALTORS® ASSOCIATION OF EDMONTON. COPYRIGHT 2025 BY THE REALTORS® ASSOCIATION OF EDMONTON. ALL RIGHTS RESERVED. Trademarks are owned or controlled by the Canadian Real Estate Association (CREA) and identify real estate professionals who are members of CREA (REALTOR®, REALTORS®) and/or the quality of services they provide (MLS®, Multiple Listing Service®)

Listing information last updated on April 30th, 2025 at 3:02am MDT