

# \$1,575,000 - 9724 82 Avenue, Edmonton

MLS® #E4418759

**\$1,575,000**

0 Bedroom, 0.00 Bathroom,  
Single Family on 0.00 Acres

Strathcona, Edmonton, AB

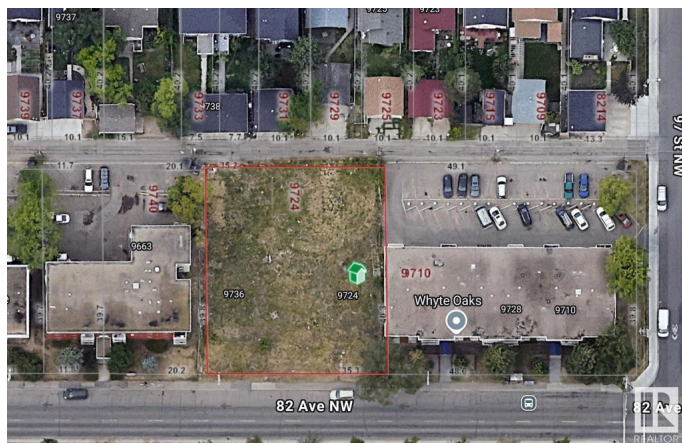
This is a prime opportunity to invest in three side-by-side lots located in a high-demand area on Whyte Avenue. Currently zoned for RA8 development, the lots offer the potential for rezoning to Mixed-Use CB3, which allows for more versatile development options. This is an ideal location for creating, building, or reimagining a project that capitalizes on the area's growth and demand.

## Essential Information

MLS® #	E4418759
Price	\$1,575,000
Bathrooms	0.00
Acres	0.00
Type	Single Family
Sub-Type	Vacant Lot/Land
Status	Active

## Community Information

Address	9724 82 Avenue
Area	Edmonton
Subdivision	Strathcona
City	Edmonton
County	ALBERTA
Province	AB
Postal Code	T6E 1Y5



**Exterior**

Exterior Features    Back Lane, Flat Site, Schools, Shopping Nearby, Subdividable Lot, See Remarks

**Additional Information**

Date Listed            January 21st, 2025  
Days on Market        99  
Zoning                  Zone 15

DATA IS DEEMED RELIABLE BUT IS NOT GUARANTEED ACCURATE BY THE REALTORS® ASSOCIATION OF EDMONTON. COPYRIGHT 2025 BY THE REALTORS® ASSOCIATION OF EDMONTON. ALL RIGHTS RESERVED.Trademarks are owned or controlled by the Canadian Real Estate Association (CREA) and identify real estate professionals who are members of CREA (REALTOR®, REALTORS®) and/or the quality of services they provide (MLS®, Multiple Listing Service®)  
Listing information last updated on April 30th, 2025 at 7:47pm MDT